

**TOWN OF FERDINAND, INDIANA**  
**ADA TRANSITION PLAN**

**INTRODUCTION**

The Americans with Disabilities Act (ADA) was enacted on July 26, 1990, and later amended effective January 1, 2009. As written and implemented, the ADA provides comprehensive civil rights protections to persons with disabilities in the areas of employment, state and local government services, access to public accommodations, transportation, and telecommunication. The ADA is a companion civil rights legislation to the Civil Rights Act of 1964 and Section 504 of the Rehabilitation Act of 1973. In order to be protected by the ADA, one must have a disability or have a relationship or association with an individual with a disability. An individual with a disability is defined by the ADA as a person who has a physical or mental impairment that substantially limits one or more major life activities, a person who has a history or record of such impairment, or a person who is perceived by others as having such impairment. The ADA, however, does not specifically name all of the impairments that are covered. The ADA is divided into five sections covering the following topics:

Title I: Employment

Title II: Public Services (and Transportation)

Title III: Public Accommodations (and Commercial Facilities)

Title IV: Telecommunications

Title V: Miscellaneous Provisions

Title II specifically prohibits state and local governments from discriminating against persons with disabilities or from excluding participation in or denying benefits of programs, services, or activities to persons with disabilities. It is under this title that this transition plan has been prepared. This transition plan is intended to outline the methods by which the Town will implement the non-discrimination policies described in Title II.

**TRANSITION PLAN DEVELOPMENT**

To ensure program accessibility for people with disability in the community, the Town has developed a Transition Plan, which is to be considered good practice.

**A. ADA Coordinator:**

Effective communication is essential to address all the complaints or concerns of all individuals. In order to keep maintaining the lines of communication open, and thereby ensuring effective communication between all parties, the Town has designated the Property Manager as the ADA coordinator. The ADA coordinator shall coordinate the Town's efforts to comply with and carry out its responsibilities under Title II of the ADA, including any investigation of any complaint communicated to the ADA coordinator. Such complaints may take the form of alleging noncompliance with ADA mandates or alleging any actions that would be prohibited under the ADA. The Town shall make available to all interested individuals the names, office address, and telephone number of the employee so designated and has adopted procedures for the prompt and equitable resolution of complaints. Every complaint must be directed in writing to the Clerk/Treasurer.

## **B. Notice / Grievance Procedure:**

The Grievance Procedure, attached hereto and made a part of this Plan, is intended to adhere to the standards outlined in the ADA. The procedure must be used by anyone who wishes to file a complaint alleging discrimination on the basis of disability in the provisions of services, activities, programs, or benefits provided by the Town. The complaint should be in writing and contain information about the alleged discrimination such as name, address, phone number of complainant and location, date and description of the problem. The Discrimination Complaint/Grievance Form, attached hereto and made a part of this Plan, must be used to lodge a complaint.

The ADA notice attached hereto and made a part of this Plan, will be posted at the Town Hall, on the Town website, and published in the Ferdinand News on an annual basis.

## **C. Self - Evaluation / Commitment / Schedule**

The Town of Ferdinand has conducted an evaluation of curb ramps and sidewalks using a Trimble GPS device recording conditions along with a picture in order to create an inventory of needed ADA repairs. The majority of curb ramps and sidewalks do not meet ADA requirements. The Town is committed to making all sidewalks and curb ramp areas accessible to all pedestrians including those with disabilities. The Town has conducted an evaluation of public buildings, and other public places owned by the Town for their compliance with ADA requirements in order to create an inventory of needed ADA repairs. The Town is committed to making structural changes to existing facilities to meet ADA program accessibility requirements, undertaking readily achievable barrier removal. The Town is further committed to retaining necessary professional services to provide sufficient technical expertise to properly assess the above-noted facilities. The Town is using a priority list in order to focus its scarce funding resources in a manner which balances costs, considers the potential immediate or long term benefits to disabled persons, and considers the benefit to the greatest number of disable persons. The Town Council states that it must use its discretion to allocate scarce resources to its ADA commitments along with its other budget needs. This will be accomplished through the following programs:

The Town has completed its ADA assessment, remediation cost estimate and priority list for curb ramps, sidewalks and facilities accessibility needs.

The Town has prepared design and engineering for 2021 projects and will complete construction of 2021 projects by December 31, 2021.

Based on available funds, subsequent design, engineering, and construction will take place in future years, as funding is available.

The Town Council currently commits at least \$29,000 dollars annually into its Sidewalk/Curb Replacement Program, specifically to address ADA remediation. A commitment was made to make 126 ramps compliant beginning 2014. As of the end of 2019, 64 are compliant. Estimated completion will be 2030 using 2021 costs estimates exclusive of design and engineering costs. (Estimated construction cost for 2021 is \$1,890.00 per ramp) The Town has an inventory list for sidewalks with a total of (3.720 mile or 19,641 feet) with an estimated cost \$7.60 per square foot using 2021



costs exclusive of design and engineering costs. The Town Council's goal, contingent on available funds, is to complete sidewalk requirements by 2030. The Town has already made structural changes to existing facilities' entrances along with needed parking spaces to meet accessibility requirements.

The Town will, as part of its Plan, also will seek to make third parties responsible for ADA compliance with respect to any new construction prior to acceptance by the Town.

The Town anticipates that the Indiana Department of Transportation will be responsible for the assessment and remediation of any ADA deficiencies within State rights-of-way located within the Town.

#### **D. Self - Evaluation / Commitment / Schedule / Attachments**

Attachments #1 & #2 Ramp and Sidewalk Locations Compliant Updated 2021

Attachment # 1 ADA Ramp Locations

Attachment # 2 Sidewalk Locations Blue marked Sidewalks that are Compliant. Red marked Sidewalks are Non Compliant.

Attachments #3-#8 Completed 2014 ADA projects

The requirements were made in 2014 we changed door swing and frame style, place concrete parking slab in front of Town Manager and Street Department offices to meet ADA standards for accessible design stripped with a symbol of accessibility and access loading zone (Funded by EDIT and CCI) estimate cost \$4,967, Place concrete parking slab by the west side entrance door on Fire Station #1 with a stripped symbol of accessibility and access loading zone (Funded by EDIT) estimate cost \$3,764, Remove existing concrete sidewalk and ramp by the Senior Citizens center activity room at 9<sup>th</sup> and Missouri street (Funded by EDIT) estimate cost \$3,940, Drafting and Engineering costs \$2,000.

Attachments #6 #7 #8 Sidewalk and Curb Ramps 2014 replacement projects for ADA compliance West Main and 8<sup>th</sup> Street (Funded by Sidewalk/Curb Replacement Program) estimate cost \$7,764, Sidewalk and Curb Ramps replacement West Main and 6<sup>th</sup> Street (Funded by Sidewalk/Curb Replacement Program) cost estimate \$5,565, Sidewalk and Curb Ramps replacement East Main and 5<sup>th</sup> Street (Funded 50/50 Replacement Program Town percentage EDIT) estimate cost \$6,718, Drafting and Engineering costs \$7,500.

Attachments #9 #10 #11 #12 #13 Completed 2015 ADA projects and Professional services.

#9 Sidewalks and ADA ramps 9<sup>th</sup> and Maryland estimate cost \$9,729.00

#10 Sidewalks and ADA ramps 400 block of Main Street estimate cost \$5,034.00

#11 Sidewalks and ramps 900 block of Missouri estimate cost \$5,500.00

#12 Three pages engineering and drawing services \$3,800.00

#13 Two pages Six ADA Drinking Fountains at Town Parks estimate \$29,000.00

Attachments #14 #15 #16 #17 #18 were completed 2017 ADA projects and Professional services.

#14 Sidewalks and ADA ramps west side Virginia St. 8<sup>th</sup>to9<sup>th</sup> estimate cost \$14,800.00  
#15 Sidewalks and ADA ramps west side Virginia St. 9<sup>th</sup>to10<sup>th</sup> estimate cost \$3,400.00  
#16 Sidewalks and ADA ramps west side Virginia St. 10<sup>th</sup>to11 estimate cost \$7,600.00  
#17 Sidewalks and ADA ramps west side Virginia St. 11<sup>th</sup>to12 estimate cost \$9,500.00  
#18 Invoice for engineering and drawing services \$4,900.00

Attachments #19 #20 #21 #22 #23 were completed in 2016 due to the addition of ramps and sidewalks at 16<sup>th</sup> Street Virginia to State Road 162.

#19 Sidewalks and ADA ramps west side Virginia St. 12<sup>th</sup>to13 estimate cost \$9,500.00  
#20 Sidewalks and ADA ramps west side Virginia St. 13<sup>th</sup>to14 estimate cost \$5,500.00  
#21 Sidewalks west side Virginia St. between 14<sup>th</sup> and 16<sup>th</sup> estimate cost \$4,700.00  
#22 Sidewalks west side Virginia St. between 14<sup>th</sup> and 16<sup>th</sup> estimate cost \$4,500.00  
#23 Sidewalks and ADA ramps west side Virginia St. between 14<sup>th</sup> to 16<sup>th</sup>  
Estimate cost \$8,200.00

Attachments #14 #15 #16 #17#18 was completed 2017 ADA projects and Professional services. If funds are available the alternate projects will be connect West 5<sup>th</sup> and Virginia to the 5<sup>th</sup> Street Park where new ADA ramps and sidewalk were installed. Park project attachments #26 and #27

#14 Sidewalks and ADA ramps west side Virginia St. 8<sup>th</sup>to9<sup>th</sup> estimate cost \$14,800.00  
#15 Sidewalks and ADA ramps west side Virginia St. 9<sup>th</sup>to10<sup>th</sup> estimate cost \$3,400.00  
#16 Sidewalks and ADA ramps west side Virginia St. 10<sup>th</sup>to11 estimate cost \$7,600.00  
#17 Sidewalks and ADA ramps west side Virginia St. 11<sup>th</sup>to12 estimate cost \$9,500.00  
#18 Invoice for engineering and drawing services \$4,900.00

The funds were available to complete all attachments through #27 in 2017  
Attachments #28 #29 #30 #31 #32 Proposed 2018 ADA projects and Professional services.

#28 Sidewalk along 9<sup>th</sup> street from Virginia to the east for 99 ft. estimate cost \$5,842.75  
#29 Sidewalk along 9<sup>th</sup> street from Virginia street west to Missouri street estimate cost \$7,332.00  
#30 Sidewalk along 9<sup>th</sup> street Virginia street 140 ft. east estimate cost \$ 7,120.00  
# 31 Sidewalk along Missouri street from 7<sup>th</sup> to 8<sup>th</sup> street estimate cost \$ 9,820.00  
# 32 Invoice for engineering and drawing services \$680.00

We completed attachments in 2019 #33 #34 projects and #38 professional services.  
#33 West 7<sup>th</sup> and Missouri street 1 ADA ramp and 100ft. sidewalk going south 5ft. wide along the west side of street. Estimated cost \$5,225.00  
#34 ADA ramp North West corner of 6<sup>th</sup> and Missouri street estimated cost \$1,700.00  
#38 Invoice for engineering and drawing services \$1,650.00  
We did not complete the ADA ramp North West corner of 8<sup>th</sup> and Missouri street project #35 this will be included in the 2020, Sidewalk and ADA ramps West Main to Virginia Street along the north side of 8<sup>th</sup> street project #36 will keep on priority list, Sidewalk and ADA ramps West Main to Virginia Street along the north side of 7<sup>th</sup> street project #37 this will also remain on priority list. These projects required a lot of property owner involvement reshaping of yards and driveways which at this time we did not have worked out and will hope to do in the near future.



Attachments #35 #39 #40 Proposed 2020 ADA projects and #41 #42 Professional services.

Attachment #35 ADA ramp on the north west corner of 8<sup>th</sup> and Missouri Street was not completed and will be included in 2020 proposed projects estimated cost \$1,800.00  
Attachment #39 Sidewalk, ADA ramp and entry plan north east corner of 3<sup>rd</sup> and Maryland Street, this project is proity being a new Town property needing to be ADA accessible estimate cost \$18,457.00.

Attachment #40 ADA ramps and sidewalk plan south side of street between Missouri and Virginia estimate cost \$14,527.00.

Attachments #41 and #42 professional services Invoices \$1,190.

ADA Attachments #35, #39, and #40 were not completed in 2020, as proposed, due to delays and shut downs caused by COVID-19 restrictions. However, the funds the Town had committed to these three projects were instead to help fund the Old Town Lake ADA accessible trail, sidewalk, and shelterhouse. The construction contract and funds committed are shown in Attachment #43. Attachments #44 and #45 show the project and scope of work.

Projects #35, #39, and #40 will be our proposed projects for 2021. Professional services have already been completed in the 2020 Transition Plan.

**Some ADA Project Upgrades that Indicates the Towns commitment to be Compliant**

<b>Project</b>	<b>Year</b>	<b>Estimate Cost</b>
Removed old and constructed new Restrooms at 18 <sup>th</sup> street Park	2013	\$76,456.39
Entrance Doors Town Hall	2013	\$10,740.17
Sidewalk/Curb replacement between west 7 <sup>th</sup> and 8 <sup>th</sup> street	2012	\$10,860.00
Town Hall Parking Lot Renovation	2012	\$111,827.23
Police Station Renovation	2012	\$115,433.73
Automated Entrance Door openers-senior center	2010	\$1,500.00
Access Road to Football/Soccer field 5 <sup>th</sup> street Park	2012	\$25,000.00
Wireless Scoreboards at 5 <sup>th</sup> street Park	2011	\$6,000.00
Play System at 5 <sup>th</sup> street Park	2004	\$124,197.00
Lighted Sidewalks to access play areas, shelter house, restrooms, concession and ball fields at 5 <sup>th</sup> street Park	2005	\$20,077.00
Removed old and constructed new Shelter house at 18 <sup>th</sup> street Park	2001	\$34,370.00
Play System at 18 <sup>th</sup> street Park	2002	\$110,336.70
Lighted Sidewalks to access play areas, shelter house,		

restrooms, concession and ball field at 18 <sup>th</sup> street Park	2003	\$29,465.00
Restrooms and shelter house upgrade for accessibility at 5 <sup>th</sup> street Park	2001	\$6,305.00
Installed new sidewalks around the 5 <sup>th</sup> street park football concession building for ADA accessibility	2015	\$2,488.88
Made a portable ADA ramp to use at fests or wherever it may be needed.	2015	\$308.23
Added Sidewalks and ADA ramps along the south side of the park property on west 5 <sup>th</sup> street.	2016	\$34,125.00
Added Sidewalks and ADA ramps along the south side of 16 <sup>th</sup> street Virginia to State Road 162	2016	\$11,940.00
Added ADA accessible trail, sidewalk, and shelterhouse improvements at the Old Town Lake.	2020	\$435,100.00

### **E. ADA Standards / Guidelines**

The standards are intended to apply to all construction undertaken within the Town. The Indiana Department of Transportation design guidelines and standards drawings will serve as the primary standards and guidelines for this plan with regard to streets and sidewalks. U.S. Department of Justice guidelines and standards drawings will serve as the primary standards and guidelines for this Plan with regard to buildings and other public places owned by the Town. Other standards, if necessary, will be applied at the discretion of the ADA coordinator.

### **IMPLEMENTATION**

The Town intends to implement this Transition Plan effective the date of this document. Not only does the Town commit to following the guidelines set forth in this Transition Plan but it also commits to actively revising and amending this document as new information is discovered.



**Town of Ferdinand**  
**Grievance Procedure under**  
**The Americans with Disabilities Act**

This Grievance Procedure is established to meet the requirements of the Americans with Disabilities Act of 1990 ("ADA"). It may be used by anyone who wishes to file a complaint alleging discrimination on the basis of disability in the provision of services, activities, programs, or benefits by the Town of Ferdinand. The Town of Ferdinand's Personnel Policy governs employment-related complaints of disability discrimination.

The complaint should be in writing on the Town's "Discrimination Complaint/Grievance Form", and contain information about the alleged discrimination such as name, address, phone number of complainant and location, date, and description of the problem. Alternative means of filing complaints, such as personal interviews or a tape recording of the complaint, will be made available for persons with disabilities upon request.

The complaint should be submitted by the grievant and/or his/her designee as soon as possible but no later than 60 calendar days after the alleged violation to:

Ferdinand ADA Coordinator  
2065 Main Street  
Ferdinand, IN 47532

Within 15 calendar days after receipt of the complaint, the Ferdinand ADA Coordinator or his/her designee will meet with the complainant to discuss the complaint and the possible resolutions. Within 15 calendar days of the meeting, the ADA Coordinator or his/her designee will respond in writing, and where appropriate, in a format accessible to the complainant, such as large print or audiotape. The response will explain the position of the Town of Ferdinand and offer options for substantive resolution of the complaint.

If the response by the ADA Coordinator or his/her designee does not satisfactorily resolve the issue, the complainant and/or his/her designee may appeal the decision to the Ferdinand ADA Grievance Committee within 30 calendar days after receipt of the response, by notifying the Ferdinand Clerk-Treasurer or his/her designee.

Within 15 calendar days after receipt of the appeal, the Ferdinand ADA Grievance Committee will meet with the complainant to discuss the complaint and possible resolutions. Within 15 calendar days after the meeting, the Clerk-Treasurer or his/her designee will respond in writing, and, where appropriate, in a format accessible to the complainant, with a final resolution of the complaint.

If the response of the ADA Grievance Committee does not satisfactorily resolve the issue, the complainant and/or his/her designee may appeal the decision to the Ferdinand Town Council within 30 calendar days after receipt of the response, by notifying the Ferdinand Clerk-Treasurer or his/her designee.

Within 15 calendar days after receipt of appeal, the Ferdinand Town Council will meet with the complainant to discuss the complaint and possible resolutions. Within 15 calendar days after the meeting, the Clerk-Treasurer or his/her designee will respond in writing, and, where appropriate, in a format accessible to the complainant, with a final resolution of the complaint.

All written complaints received by the ADA Coordinator or his/her designee, appeals to the ADA Grievance Committee, and Town Council and responses from these two officials will be retained by the Town of Ferdinand for at least three years.



## **TITLE II OF THE AMERICANS WITH DISABILITIES ACT (ADA)**

### **DISCRIMINATION COMPLAINT/GRIEVANCE FORM**

Please complete this form in black ink or type. Alternate means of filing a Complaint/Grievance, such as a personal interview or audio recording, will be made available upon request to the City or Town of \_\_\_\_\_, ADA Coordinator.

Complainant Name: \_\_\_\_\_

Complainant Address: \_\_\_\_\_

City, State, Zip Code: \_\_\_\_\_

Telephone Number: \_\_\_\_\_

Complete the information below IF the Person discriminated against is not the Complainant:

Name: \_\_\_\_\_

Address: \_\_\_\_\_

City, State, Zip Code: \_\_\_\_\_

Telephone Number: \_\_\_\_\_

Date and Time of Alleged Discrimination: \_\_\_\_\_

Location of Alleged Discrimination: \_\_\_\_\_

Please describe the act(s) of discrimination providing the Name(s) where possible of individuals whom allegedly discriminated (if applicable,) or City Facilities in violation of the Americans with Disabilities Act (ADA). Attach additional pages if necessary:

What type of Corrective Action is the Complainant Seeking:

---

---

---

---

---

---

Has the Complaint been filed with another Federal, State, or Local Civil Rights Agency or Court?

Yes: \_\_\_\_\_ No: \_\_\_\_\_

If yes, with what Agency or Court: \_\_\_\_\_

Contact Person: \_\_\_\_\_

Address: \_\_\_\_\_

City, State, Zip Code: \_\_\_\_\_

Contact Telephone Number: \_\_\_\_\_

Date Filed: \_\_\_\_\_

Does Complainant intend to File with another Agency or Court: Yes: \_\_\_\_\_ No: \_\_\_\_\_

Agency or Court: \_\_\_\_\_

Address: \_\_\_\_\_

City, State, Zip Code: \_\_\_\_\_

Contact Telephone Number: \_\_\_\_\_

Additional Space for Answers: \_\_\_\_\_

---

---

---



Signature of Complainant: \_\_\_\_\_

Printed/Typed Name of Complainant: \_\_\_\_\_

Date Form Completed: \_\_\_\_\_

PLEASE RETURN COMPLETED FORM TO:

ADA Coordinator, \_\_\_\_\_

For ADA Coordinator Use Only:

Date Completed Form Received \_\_\_\_\_

Duly adopted this 19 day of January, 2021.

FERDINAND TOWN COUNCIL

  
KENNETH J. SICARD, President

  
RON WEYER, Member

  
DEBRA JOHNSON, Member

ATTEST:

  
TAMARA M. MILLER, Clerk-Treasurer



## **ATTACHMENTS**



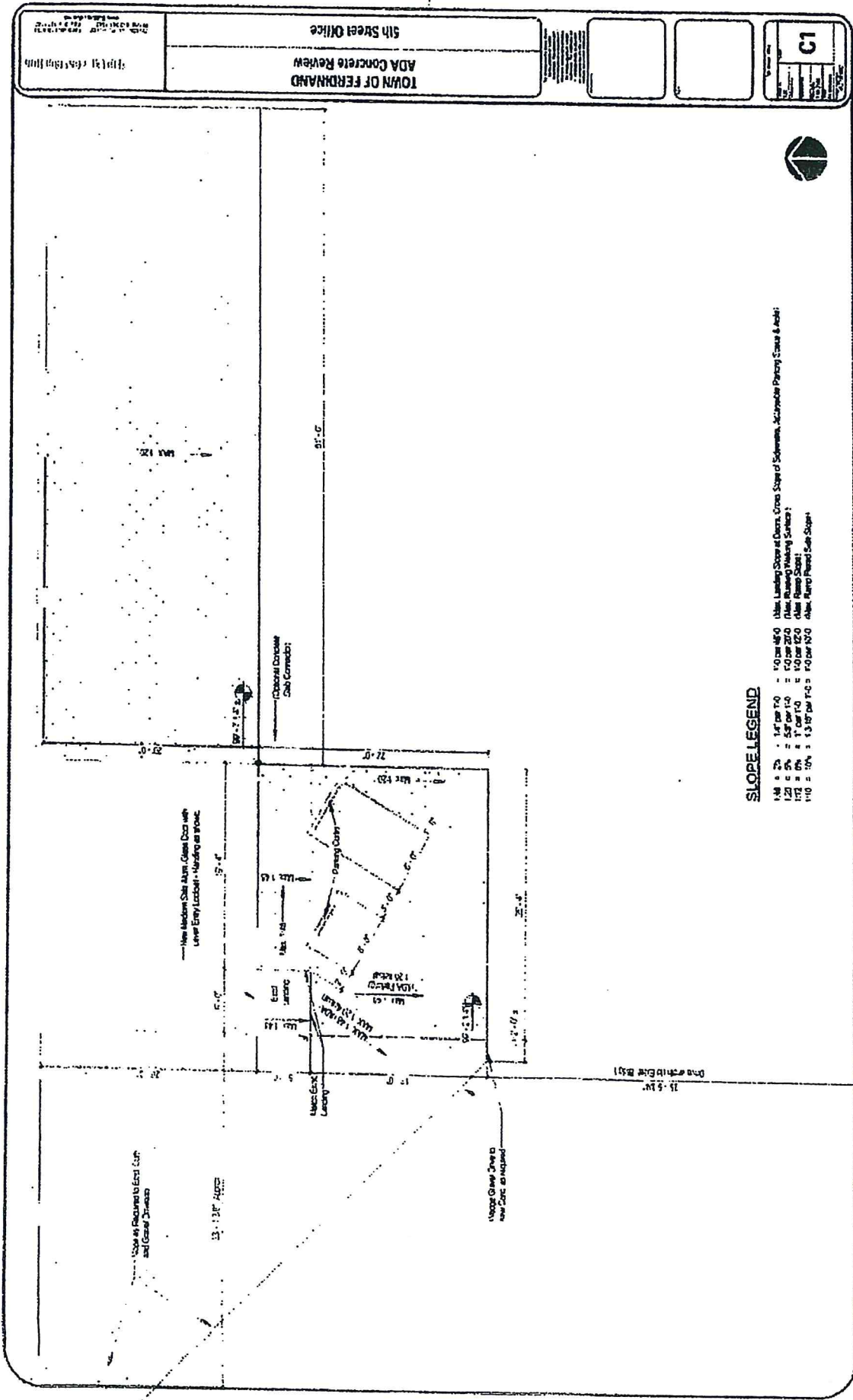








#3



**SLOPE LEGEND**

- 1:48 = 2% = 1/4" per foot
- 1:24 = 4% = 1/2" per foot
- 1:12 = 8% = 1" per foot
- 1:6 = 16% = 2" per foot
- 1:3 = 33% = 4" per foot
- 1:1.5 = 66% = 8" per foot
- 1:1 = 100% = 12" per foot
- 1:0.5 = 200% = 24" per foot
- 1:0.25 = 400% = 48" per foot
- 1:0.125 = 800% = 96" per foot
- 1:0.0625 = 1600% = 192" per foot
- 1:0.03125 = 3200% = 384" per foot
- 1:0.015625 = 6400% = 768" per foot
- 1:0.0078125 = 12800% = 1536" per foot
- 1:0.00390625 = 25600% = 3072" per foot
- 1:0.001953125 = 51200% = 6144" per foot
- 1:0.0009765625 = 102400% = 12288" per foot
- 1:0.00048828125 = 204800% = 24576" per foot
- 1:0.000244140625 = 409600% = 49152" per foot
- 1:0.0001220703125 = 819200% = 98304" per foot
- 1:0.00006103515625 = 1638400% = 196608" per foot
- 1:0.000030517578125 = 3276800% = 393216" per foot
- 1:0.0000152587890625 = 6553600% = 786432" per foot
- 1:0.00000762939453125 = 13107200% = 1572864" per foot
- 1:0.000003814697265625 = 26214400% = 3145728" per foot
- 1:0.0000019073486328125 = 52428800% = 6291456" per foot
- 1:0.00000095367431640625 = 104857600% = 12582912" per foot
- 1:0.000000476837158203125 = 209715200% = 25165824" per foot
- 1:0.0000002384185791015625 = 419430400% = 50331648" per foot
- 1:0.00000011920928955078125 = 838860800% = 100663296" per foot
- 1:0.000000059604644775390625 = 1677721600% = 201326592" per foot
- 1:0.0000000298023223876953125 = 3355443200% = 402653184" per foot
- 1:0.00000001490116119384765625 = 6710886400% = 805306368" per foot
- 1:0.000000007450580596923828125 = 13421772800% = 1610612736" per foot
- 1:0.0000000037252902984619140625 = 26843545600% = 3221225472" per foot
- 1:0.00000000186264514923095703125 = 53687091200% = 6442450944" per foot
- 1:0.000000000931322574615478515625 = 107374182400% = 12884901888" per foot
- 1:0.0000000004656612873077392578125 = 214748364800% = 25769803776" per foot
- 1:0.00000000023283064365386962890625 = 429496729600% = 51539607552" per foot
- 1:0.000000000116415321826934814453125 = 858993459200% = 103079215104" per foot
- 1:0.0000000000582076609134674072265625 = 1717986918400% = 206158430208" per foot
- 1:0.00000000002910383045673370361328125 = 3435973836800% = 412316860416" per foot
- 1:0.000000000014551915228366851806640625 = 6871947673600% = 824633720832" per foot
- 1:0.0000000000072759576141834259033203125 = 13743895347200% = 1649267441664" per foot
- 1:0.00000000000363797880709171295166015625 = 27487790694400% = 3298534883328" per foot
- 1:0.000000000001818989403545856475830078125 = 54975581388800% = 6597069766656" per foot
- 1:0.0000000000009094947017729282379150390625 = 109951162777600% = 13194139533312" per foot
- 1:0.00000000000045474735088646161895751953125 = 219902325555200% = 26388279066624" per foot
- 1:0.000000000000227373675443230809478759765625 = 439804651110400% = 52776558133248" per foot
- 1:0.0000000000001136868377216154047393798828125 = 879609302220800% = 105553116266496" per foot
- 1:0.00000000000005684341886080770236968994140625 = 1759218604441600% = 211106232532992" per foot
- 1:0.000000000000028421709430403851184844970703125 = 3518437208883200% = 422212465065984" per foot
- 1:0.0000000000000142108547152019255924224853515625 = 7036874417766400% = 844424930131968" per foot
- 1:0.00000000000000710542735760096279621124267578125 = 14073748835532800% = 1688849860263936" per foot
- 1:0.000000000000003552713678800481398105621337890625 = 28147497671065600% = 3377699720527872" per foot
- 1:0.0000000000000017763568394002406990528106689453125 = 56294995342131200% = 6755399441055744" per foot
- 1:0.00000000000000088817841970012034952640533447265625 = 112589990684262400% = 13510798882111488" per foot
- 1:0.000000000000000444089209850060174763202667236328125 = 225179981368524800% = 27021597764222976" per foot
- 1:0.0000000000000002220446049250300873816013336181640625 = 450359962737049600% = 54043195528445952" per foot
- 1:0.00000000000000011102230246251504369080066680908203125 = 900719925474099200% = 108086391056891904" per foot
- 1:0.000000000000000055511151231257521845400333404541015625 = 1801439850948198400% = 216172782113783808" per foot
- 1:0.000000000000000027755575615628760922700166702270578125 = 3602879701896396800% = 432345564227567616" per foot
- 1:0.0000000000000000138777878078143804613500833511352890625 = 7205759403792793600% = 864691128455135232" per foot
- 1:0.00000000000000000693889390390719023067504167556764453125 = 14411518807585587200% = 1729382256910270464" per foot
- 1:0.000000000000000003469446951953595115337502087783822265625 = 28823037615171174400% = 3458764513820540928" per foot
- 1:0.0000000000000000017347234759767975576687510438919111328125 = 57646075230342348800% = 6917529027641081856" per foot
- 1:0.00000000000000000086736173798839877883437552194595556640625 = 115292150460684697600% = 13835058055282163712" per foot
- 1:0.000000000000000000433680868994199389417187760972977783203125 = 230584300921369395200% = 27670116110564327424" per foot
- 1:0.0000000000000000002168404344970996947085938804864888916015625 = 461168601842738790400% = 55340232221128654848" per foot
- 1:0.00000000000000000010842021724854984735429694024324444580078125 = 922337203685477580800% = 110680464442257309696" per foot
- 1:0.000000000000000000054210108624274923677148470121622222900390625 = 1844674407370955161600% = 221360928884514619392" per foot
- 1:0.0000000000000000000271050543121374618385742350608111114501953125 = 3689348814741910323200% = 442721857769029238784" per foot
- 1:0.00000000000000000001355252715606873091928711753040555572509765625 = 7378697629483820646400% = 885443715538058477568" per foot
- 1:0.0000000000000000000067762635780343654596435587652027778625048828125 = 14757395258967641292800% = 1770887431076116955136" per foot
- 1:0.000000000000000000003388131789017182729821779382601388931250244140625 = 29514790517935282585600% = 3541774862152233910272" per foot
- 1:0.00000000000000000000169406589450859136491088969130069446562501220703125 = 59029581035870565171200% = 7083549724304467820544" per foot
- 1:0.00000000000000000000084703294725429568245544484565034723281250061015625 = 118059162071741130342400% = 14167099448608935641088" per foot
- 1:0.000000000000000000000423516473627147841227722422825173616406250030528125 = 236118324143482260684800% = 28334198897217871282176" per foot
- 1:0.00000000000000000000021175823681357392061386121141258680820312500152640625 = 472236648286964521369600% = 56668397794435742564352" per foot
- 1:0.0000000000000000000001058791184067869603069306057062934041015625000763203125 = 944473296573929042739200% = 113336795588871485128704" per foot
- 1:0.00000000000000000000005293955920339348015346530285314670205078125000381640625 = 1888946593147858085478400% = 226008391177742970257408" per foot
- 1:0.000000000000000000000026469779601696740076732651426573351025390625001908203125 = 3777893186295716170956800% = 452016782355485940514816" per foot
- 1:0.0000000000000000000000132348898008483700383663257132866756269531250009541015625 = 7555786372591432341913600% = 904033564710971881029632" per foot
- 1:0.000000000000000000000006617444900424185019183162856643337813476562500047705078125 = 15111572745182864683827200% = 1808067129421943762059264" per foot
- 1:0.0000000000000000000000033087224502120925095915814283216689067382812500238525390625 = 30223145490365729367654400% = 3626134258843887524118528" per foot
- 1:0.00000000000000000000000165436122510604625479579071416083445336914062500119261953125 = 60446290980731458735308800% = 7252268517687775048237056" per foot
- 1:0.000000000000000000000000827180612553023127397895357080417226684570312500059630937500 = 120892581961462917470617600% = 14504537035375550096474112" per foot
- 1:0.00000000000000000000000041359030627651156369894767854020861334228515625000298154687500 = 241785163922925834941235200% = 28969074070751100192948224" per foot
- 1:0.000000000000000000000000206795153138255781849473839270104306671142812500014907723437500 = 483570327845851669882470400% = 57938148141502200385896448" per foot
- 1:0.000000000000000000000000103397576569127890924736919635052153335571428125000074538617187500 = 967140655691703339764940800% = 115876296283004400771792896" per foot
- 1:0.000000000000000000000000051698788284563945462368459817526076667785714281250000372693085937500 = 1934281311383406679529881600% = 231752592566008801543585792" per foot
- 1:0.000000000000000000000000025849394142281972731184229908763038333892857142812500001863465429687500 = 3868562622766813359059763200% = 463505185132017603087171584" per foot
- 1:0.00000000000000000000000001292469707114098636559211495438151916689642857142812500000931732714687500 = 7737125245533626718119526400% = 927010370264035206174343168" per foot
- 1:0.000000000000000000000000006462348535570493182796057477190759583448214285714281250000046586635723437500 = 15474250491067253436239052800% = 1854020740528070412348686336" per foot
- 1:0.000000000000000000000000003231174267785246591398028738595297979174107142857142812500000232933178617187500 = 30948500982134506872478105600% = 3708041481056140824697372672" per foot
- 1:0.000000000000000000000000001615587133892623295699014369297639895872053571428571428125000001164665893085937500 = 61897001964269013744956211200% = 7416082962112281649394745344" per foot
- 1:0.00000000000000000000000000080779356694631164784950718464881994793602678571428571428125000005823329465429687500 = 123794003928538027489912422400% = 14832165924224563298789490688" per foot
- 1:0.0000000000000000000000000004038967834731558239247535923244099739680133928571428571428125000002911664732714687500 = 247588007857076054979824844800% = 29664331848449126597578981376" per foot
- 1:0.00000000000000000000000000020194839173657791196237679616220498698400669642857142857142812500000145583236635723437500 = 495176015714152109959649689600% = 59328663696898253195157962752" per foot
- 1:0.00000000000000000000000000010097419586828895598118839808110249349200334821428571428571428125000000727916183178617187500 = 990352031428304219919299379200% = 118657327393796506390315925504" per foot
- 1:0.00000000000000000000000000005048709793414447799059419904055124674600167410714285714285714281250000003639580915893085937500 = 495176015714152109959649689600% = 59328663696898253195157962752" per foot
- 1:0.00000000000000000000000000002524354896707223899529709952027562337300083705357142857142857142812500000018197904579465429687500 = 247588007857076054979824844800% = 29664331848449126597578962752" per foot
- 1:0.0000000000000000000000000000126217744835361194976485497601378116865004185267857142857142857142812500000009098952289732714687500 = 123794003928530427489912422400% = 14832165924224563298789490688" per foot
- 1:0.00000000000000000000000000000631088724176805974882427488006890584325020926339285714285714285714281250000000454947614486635723437500 = 61897001964265213744956211200% = 7416082962112281649394745344" per foot
- 1:0.00000000000000000000000000000315544362088402987441213744003445292162510463169642857142857142857142812500000002274738072433178617187500 = 30948500982132606872478105600% = 37080414810561408246973726752" per foot
- 1:0.00000000000000000000000000000157772181044201493720606872001722646081255231584821428571428571428571428125000000011373690362165893085937500 = 15474250491066303436239052800% = 18540207405280704123486863376" per foot
- 1:0.0000000000000000000000000000007888609052210074686030343600086132304062761579241071428571428571428571428125000000005686845181079465429687500 = 77371252455331517489912422400% = 92701037026403520617434316768" per foot
- 1:0.00000000000000000000000000000039443045261050373430151718000430661520313807896205357142857142857142857142812500000002843422590539732714687500 = 386856262276657587449

#3

3rd Street

Small T' extension

Carolina St.

Keep Existing sidewalk area between  
as greater than 1'12" from edge of  
to be used as accessible route. (Note  
from 1'12" from edge)

NOTE  
If You require a raised ADA Cut in sidewalk  
it is required to be on opposite side of street

Keep Existing Sidewalk as wide ADA Compliant  
Change out to 4'0" wide ADA Compliant (ADA 2010)  
if existing sidewalk does not meet ADA (2010)

Small T' extension

Keep Existing Sidewalk as wide ADA Compliant  
Change out to 4'0" wide ADA Compliant (ADA 2010)  
if existing sidewalk does not meet ADA (2010)

Non-Accessible Entry

Non-Accessible Entry

ADA Max 2'0"0" Clear, Landing  
at least 1'0"0" wide

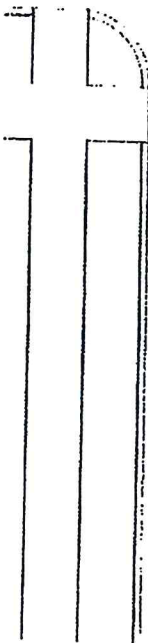
Existing ADA Compliant Sidewalk  
Proposed to be replaced by ADA  
New Ramps at 4'0"

4th Street

1 Fire Station  
1/16" = 1'-0"

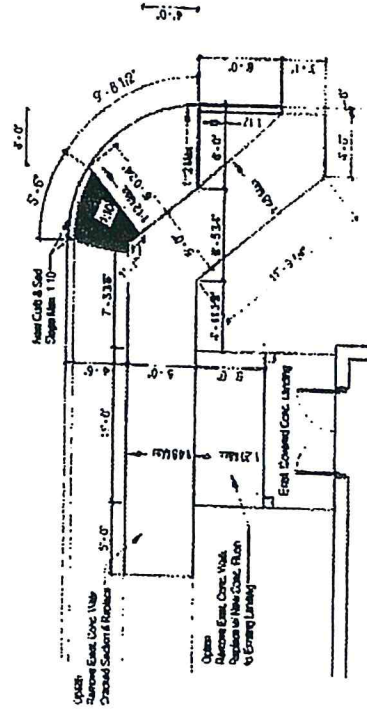


	TOWN OF FERDINAND ADA Concrete Review		3rd Street Fire Station 3rd Street, Ferdinand, IN 47325 Phone: 317-838-1234 Fax: 317-838-1235 Email: info@ferdinand.in.gov
	3rd Street Fire Station 3rd Street, Ferdinand, IN 47325 Phone: 317-838-1234 Fax: 317-838-1235 Email: info@ferdinand.in.gov		

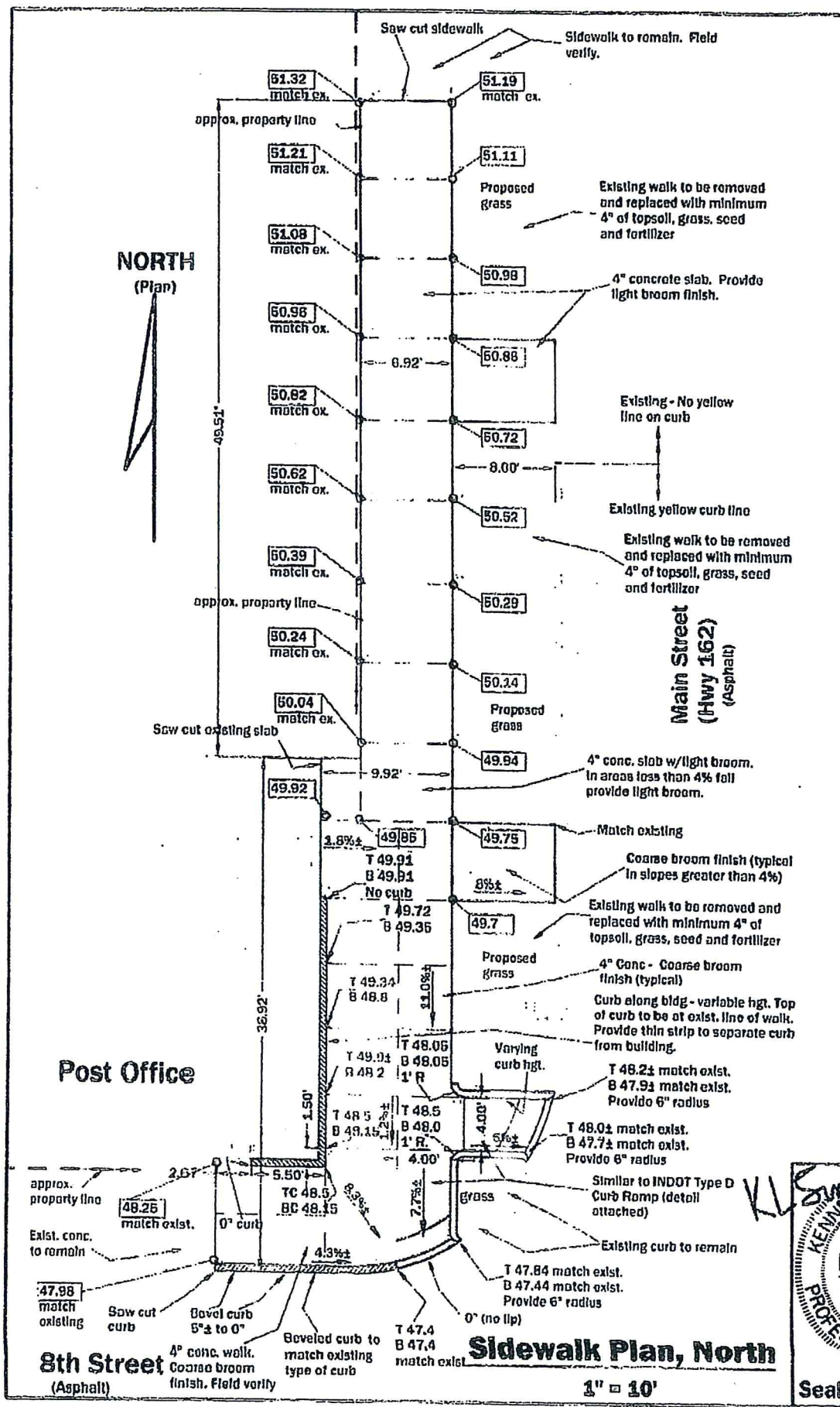


**9th Street**

### Rocky Flats, Painted Crossing







**Town of Ferdinand Sidewalk Repair - 2 locations**  
**Main & 8th Streets and at Main & 6th Streets**  
**Ferdinand, Indiana**

**Engineer Associates, Inc.**  
 645 Main Street, #201  
 Tell City, Indiana 47586  
 Telephone: 812-547-1100  
 Cell: 812-719-8345  
 Indy phone: 317-841-3113  
 KLSimpsonPE@Comcast.net

**Kenneth Leo Simpson, P.E.**

**Drawn: KLS**  
**Drawing Date: 12/12/12**  
**Revision Date:**  
**3/13/13 Rework grades at North corner. Change Stand's.**

**Plot Information:**  
 File Name: Ferdinand Sidewalk #2  
 Plot Date:  
 CAD Operator: KLS



**12-30**

Sheet number  
**C1**

Seal

#4

**Town of Ferdinand Sidewalk Repair - 2 locations**  
**Main & 8th Streets and at Main & 6th Streets**  
**Ferdinand, Indiana**

**Engineer Associates, Inc.**  
 645 Main Street, #201  
 Tell City, Indiana 47586  
 Telephone: 812-847-1100  
 Cell: 812-719-8346  
 Indy phone: 317-841-3113  
 KLSimpsonPE@Comcast.net

Kenneth Leo Simpson, P.E.

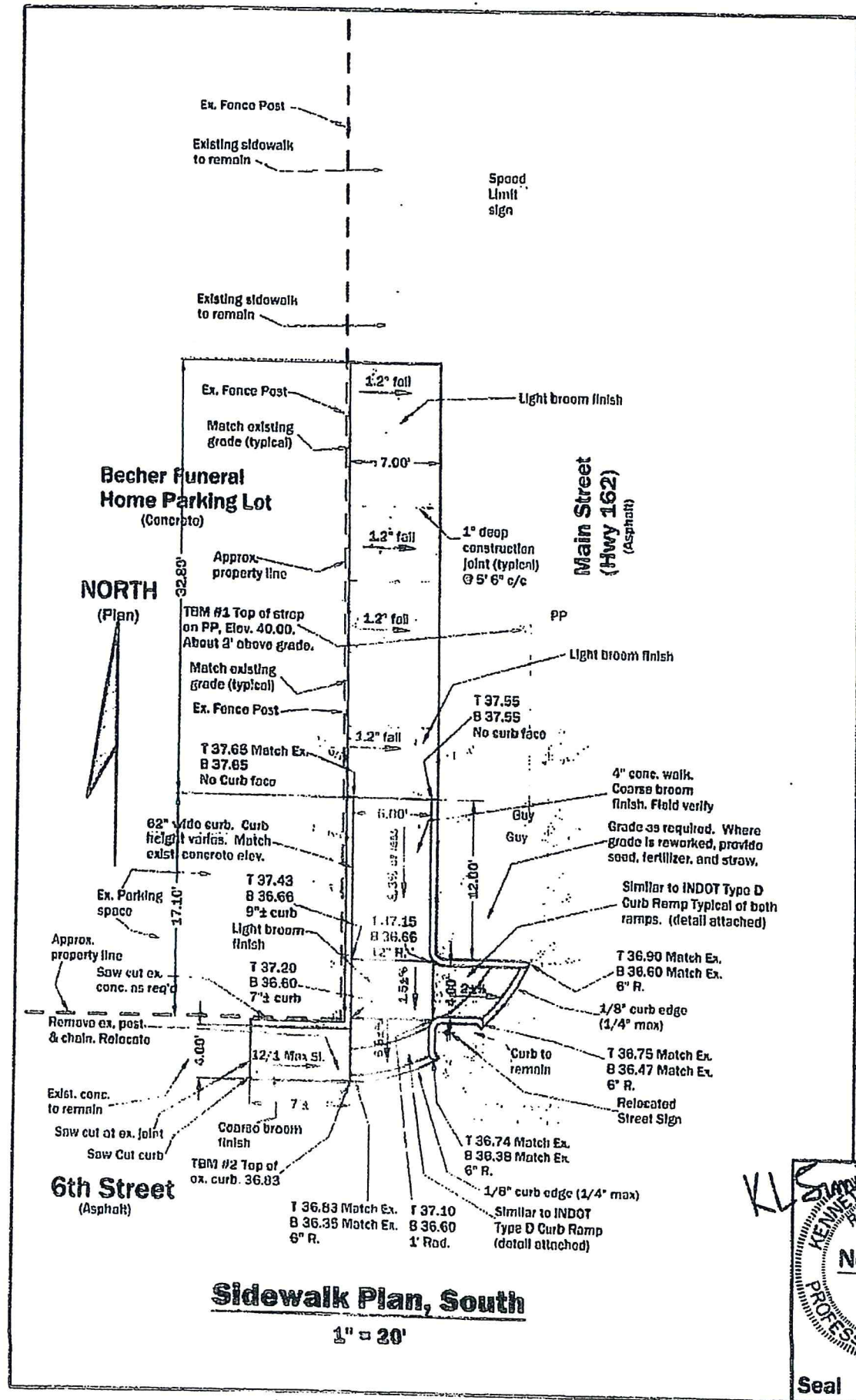
Drawn: KLS  
 Drawing Date: 12/12/12  
 Revision Date:  
 3/13/13 Rework grades at  
 North corner. Change Stand's.

**Plot Information:**  
 File Name: Ferdinand Sidewalk #2  
 Plot Date:  
 CAD Operator: KLS



12-30

Sheet number  
**C2**





#5

**Town of Ferdinand**  
**Proposed Sidewalks and ADA Ramps**  
**500 Block of Main Street (State Highway 162) - East Side**  
**Ferdinand, Indiana**

**Engineer Associates, Inc.**  
 645 Main Street, #201  
 Tell City, Indiana 47586  
 Telephone: 812-547-1100  
 Cell: 812-719-8345  
 Indy phone: 317-841-3113  
 KLSimpsonPE@Comcast.net

**Kenneth Leo Simpson, P.E.**

**Drawn: KLS**  
**Drawing Date: 3/17/14**  
**Revision Date:**

**Plot Information:**  
 File Name: Ferdinand Sidwlk.500  
 Plot Date:  
 CAD Operator: KLS

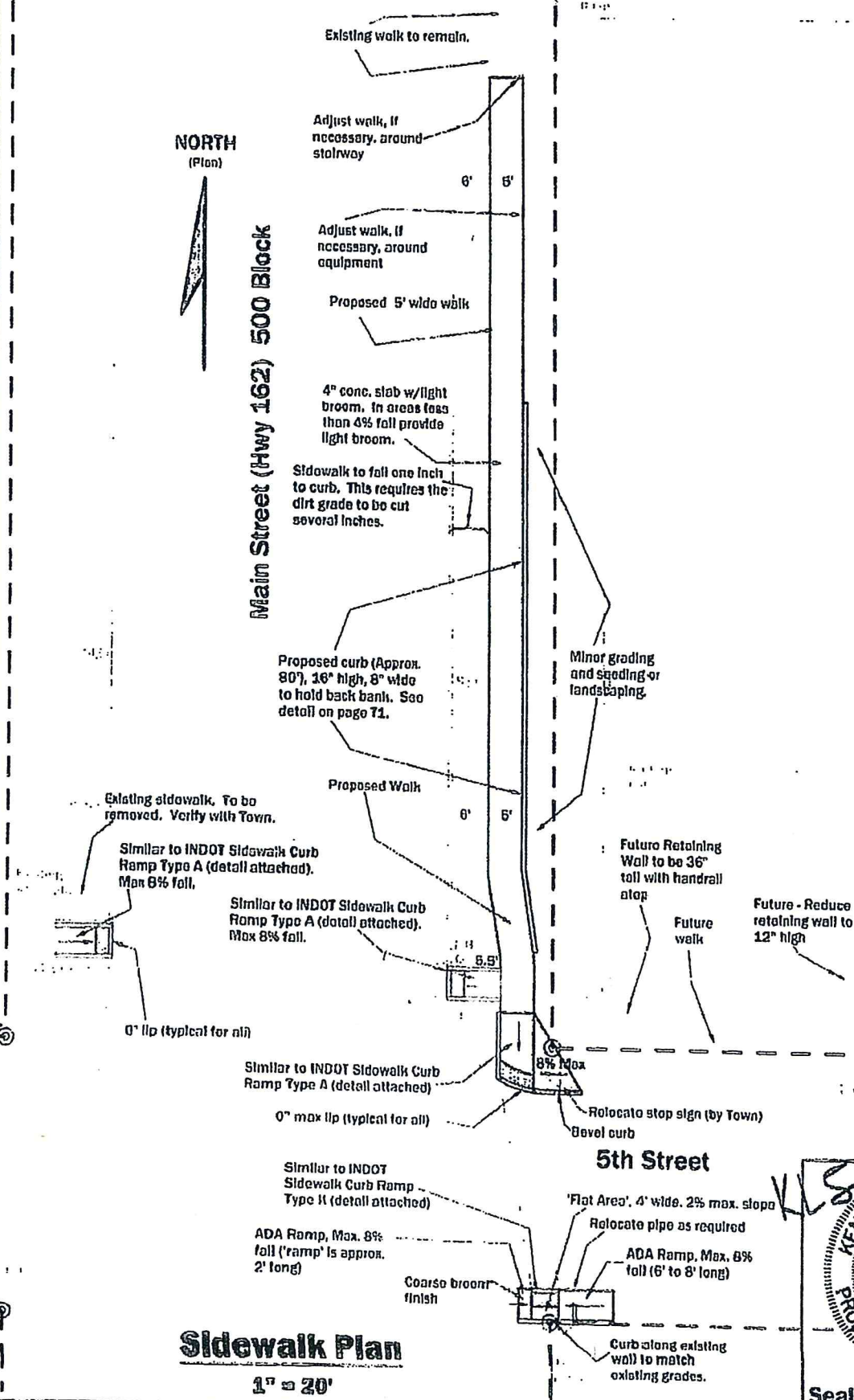


14-07

Sheet number  
**C1**

**NORTH**  
 (Plan)

**Main Street (Hwy 162) 500 Block**

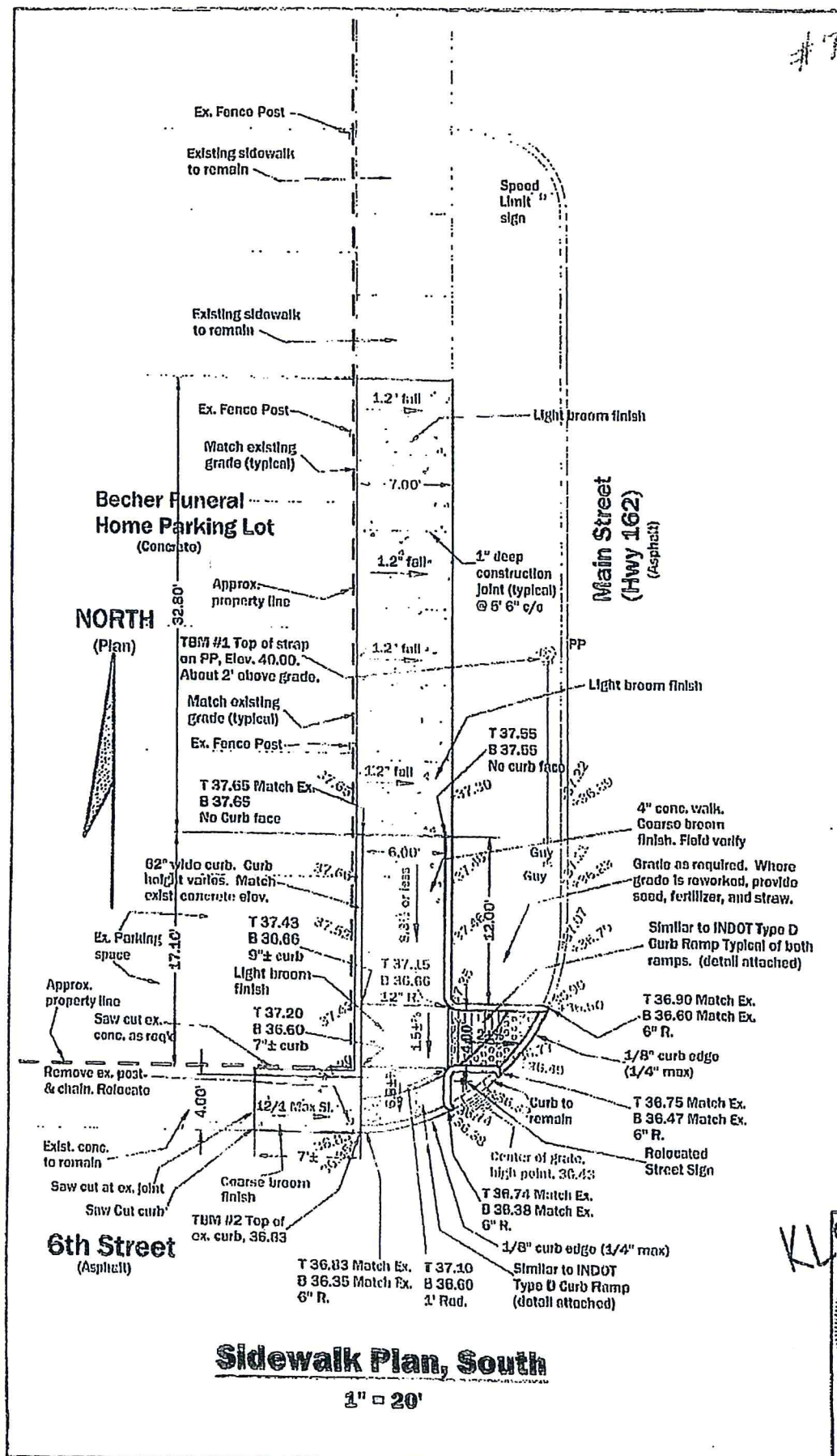


**Sidewalk Plan**  
 1" = 20'

Seal







**Town of Ferdinand Sidewalk Repair - 2 locations**  
Main & 8th Streets and at Main & 6th Streets  
Ferdinand, Indiana

**Engineer Associates, Inc.**  
648 Main Street, #203  
Toll City, Indiana 47586  
Telephone: 812-547-1100  
Cell: 812-719-8346  
Indy phone: 317-841-3113  
KLSimpsonPE@Comcast.net

**Kenneth Leo Simpson, P.E.**

Drawn: KLS  
Drawing Date: 12/12/12  
Revision Date:  
3/13/13 Rework grades at  
North corner. Change Stand's.

### Plot information:

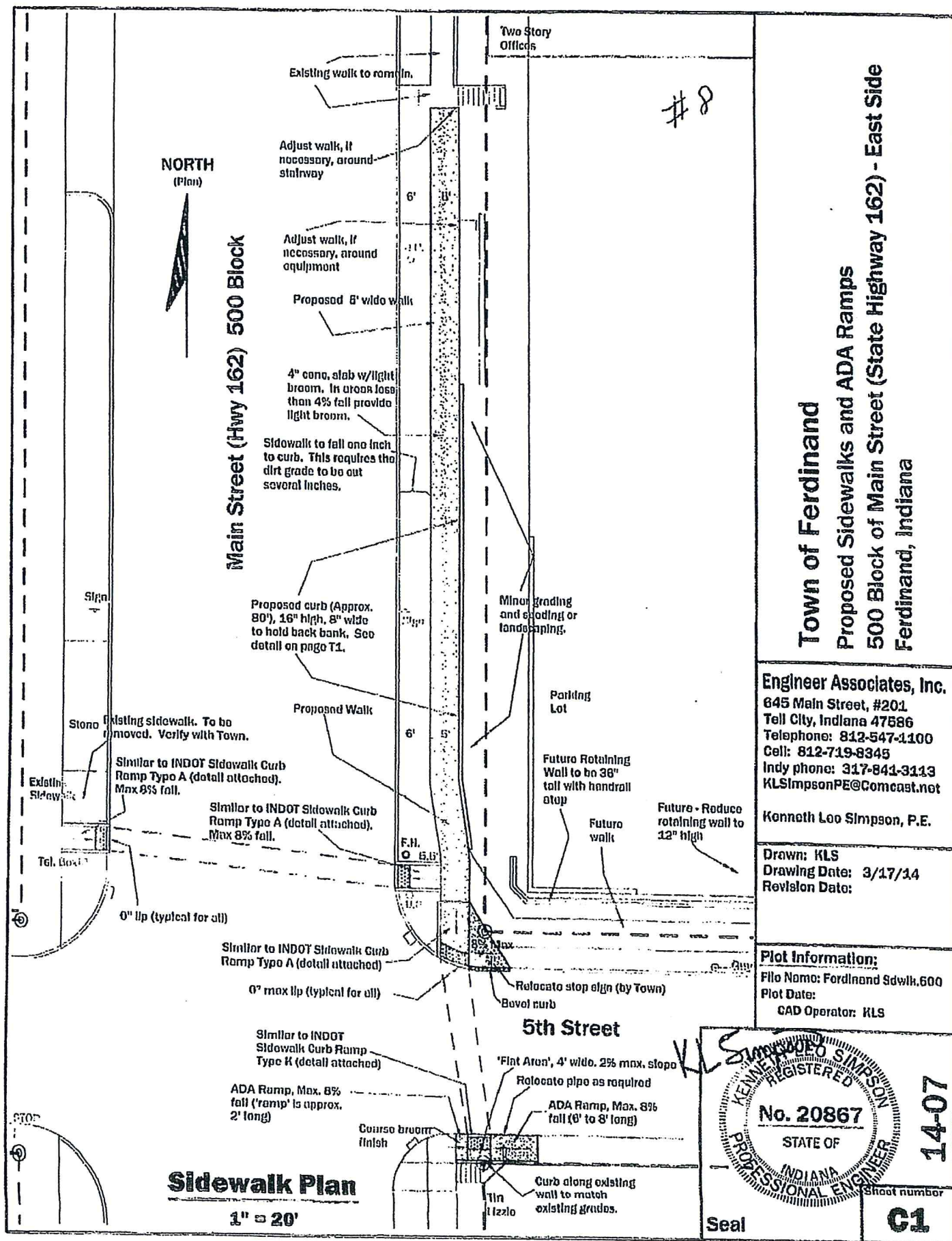
File Name: Ferdinand Sidewalk #2  
Plot Date:  
CAD Operator: KLS



Wayne Simpson  
 Registered Professional Engineer  
 No. 20867  
 State of Indiana

**Seat**





**Town of Ferdinand**  
**Proposed Sidewalks and ADA Ramps**  
**500 Block of Main Street (State Highway 162) - East Side**  
**Ferdinand, Indiana**

**Engineer Associates, Inc.**  
 645 Main Street, #201  
 Tell City, Indiana 47586  
 Telephone: 812-547-1100  
 Cell: 812-719-8345  
 Indy phone: 317-841-3113  
 KLSimpsonPE@Comcast.net

**Kenneth Leo Simpson, P.E.**

**Drawn: KLS**  
**Drawing Date: 3/17/14**  
**Revision Date:**

**Plot Information:**  
 File Name: Ferdinand Sidwk.600  
 Plot Date:  
 CAD Operator: KLS



**Seal**

Sheet number

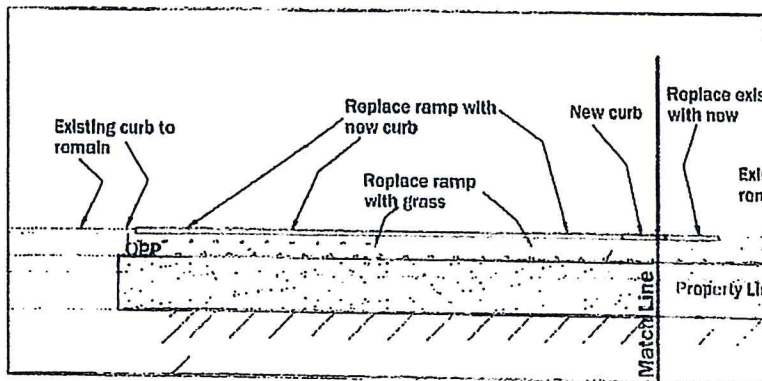
**C1**

**14-07**

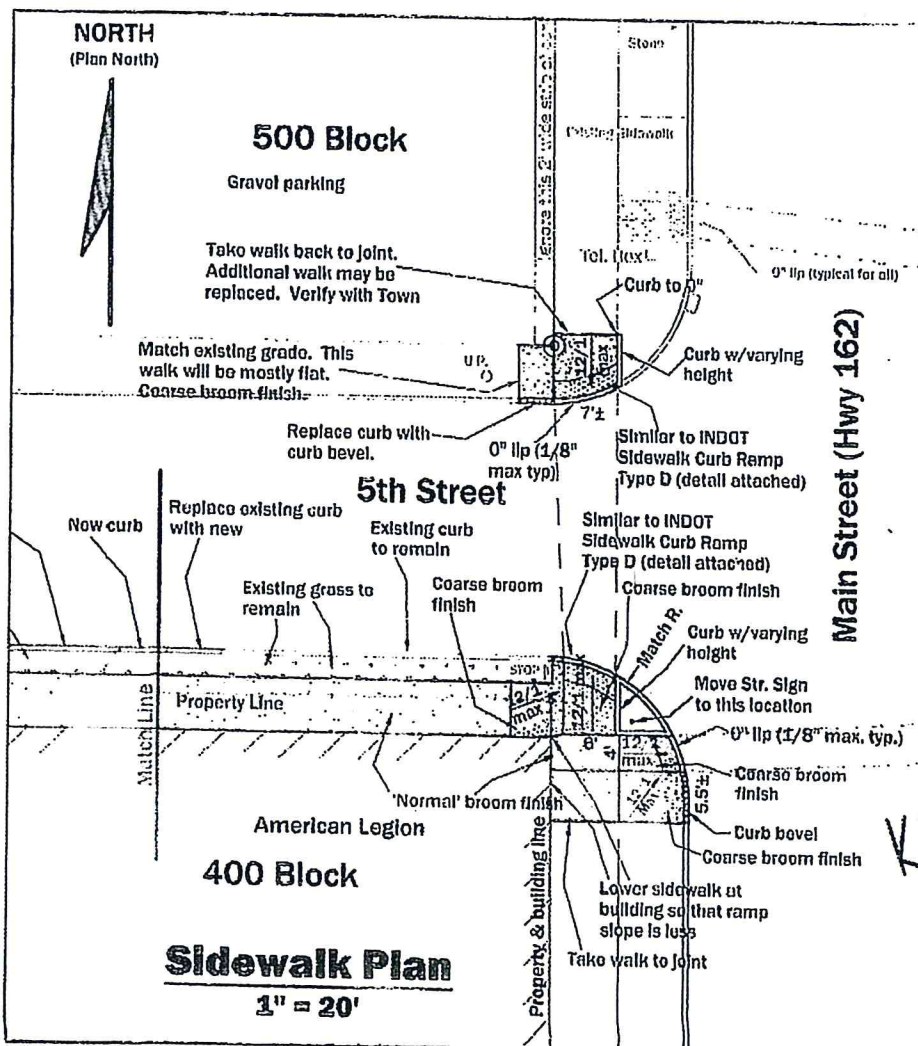








See Continuation Above



**Town of Ferdinand**  
**Proposed Sidewalks and ADA Ramps**  
**Near American Legion**  
**400 Block of Main Street (State Highway 162) - West Side**  
**Ferdinand, Indiana**

**Engineer Associates, Inc.**  
 645 Main Street, #201  
 Tell City, Indiana 47586  
 Telephone: 812-647-1100  
 Cell: 812-719-8345  
 Indy phone: 317-841-3113  
 KLSimpsonPE@Comcast.net

Kenneth Leo Simpson, P.E.

Drawn: KLS  
 Drawing Date: 2/22/15  
 Revision Date:

**Plot Information:**  
 File Name: Ferd, Sidwk, Am, Legion  
 Plot Date:  
 CAD Operator: KLS



Seal

Sheet number

**C1**

**15-04**





NORTH  
(Plan North)



Property Line

Match Line

Missouri Street

Existing Walk

Alley

Replace walk  
to joint. Match  
existing walk.

Place new walk  
1/16" higher than  
existing curb

Proposed 4" walk.  
Joints @ 4' c/c.

Place new slab  
1/16" higher than  
existing curb

Proposed  
6" slab

Match  
Existing  
grades.

### Sidewalk Plan

1" = 10'

**Town of Ferdinand**  
900 Block of Missouri  
Ramps and sidewalks  
Ferdinand, Indiana

**Engineer Associates, Inc.**  
645 Main Street, #201  
Tell City, Indiana 47586  
Telephone: 812-547-1100  
Cell: 812-719-8345  
Indy phone: 317-841-3113  
KLSimpsonPE@Comcast.net

Kenneth Leo Simpson, P.E.

Drawn: KLS  
Drawing Date: 4/3/15  
Revision Date:

**Plot Information:**  
File: Ferdinand.900 Block.Missouri  
Plot Date:  
CAD Operator: KLS



15-05

Sheet number

Seal

2 of 2

**ENGINEER ASSOCIATES, Inc.**

*Since 1990*

645 Main Street, Suite 201  
Tell City, Indiana 47586

(812) 547-1100  
e-mail:

Kenneth Leo Simpson, P.E.  
P.E. License in Indiana & Kentucky  
klsimpsonpe@comcast.net

April 7, 2015

Town of Ferdinand  
2065 Main Street  
Ferdinand, IN 47532

Attn: Tom Lueken

Re: Curb Ramps  
Near St. Ferdinand Catholic Church, 9<sup>th</sup> and Maryland  
Ferdinand, IN

**INVOICE**

For engineering services on the referenced project, performed during the period January 26, 2015 through April 7, 2015 to provide a design for the referenced project, including creating page C1 of 1, shooting grades, and associated work.

**Please remit \$575.00**

Net due 30 days

**ENGINEER ASSOCIATES, Inc.**

**Since 1990**

**645 Main Street, Suite 201  
Tell City, Indiana 47586**

**(812) 547-1100  
e-mail:**

**Kenneth Leo Simpson, P.E.  
P.E. License in Indiana & Kentucky  
klsimpsonpe@comcast.net**

**April 7, 2015**

**Town of Ferdinand  
2065 Main Street  
Ferdinand, IN 47532**

**Attn: Tom Lueken**

**Re: Sidewalk submittal to INDOT  
Near American Legion, 5<sup>th</sup> and Main  
Ferdinand, IN**

**INVOICE**

For engineering services on the referenced project, performed during the period January 26, 2015 through April 7, 2015 to provide a design for the referenced project, including creating pages T1 and CI, attaching five INDOT drawings, researching the bond information, submittal to INDOT, acceptance from INDOT, and associated work.

**Please remit \$2,600.00**

**Net due 30 days**



**ENGINEER ASSOCIATES, Inc.**

*Since 1990*

645 Main Street, Suite 201  
Tell City, Indiana 47586

(812) 547-1100  
e-mail:

Kenneth Leo Simpson, P.E.  
P.E. License in Indiana & Kentucky  
klsimpsonpc@comcast.net

April 7, 2015

Town of Ferdinand  
2065 Main Street  
Ferdinand, IN 47532

Attn: Tom Lueken

Re: Curb Ramps and sidewalks  
Near Police Station, 10<sup>th</sup> and Missouri  
Ferdinand, IN

**INVOICE**

For engineering services on the referenced project, performed during the period January 26, 2015 through April 7, 2015 to provide a design for the referenced project, including creating pages 1 of 2 and 2 of 2, shooting grades, measuring, and associated work.

**Please remit \$625.00**

Net due 30 days



**Haws**

model **3380FR**  
Pedestal-Mounted Drinking Fountain

## FEATURES & BENEFITS

### BUBBLER HEAD

Polished chrome-plated brass bubbler head with an integral basin shank and inserted roll pin adds vandal resistance strength to the design, and the shielded angled stream orifice produces a steady sanitary source of water.

### GALVANIZED FINISH

Tough galvanized coating is ideal for areas where vandalism and graffiti is an issue. Due to the galvanizing process, appearance of the finish may vary.

### CONSTRUCTION

Heavy-duty 11 gauge galvanized steel pedestal with a green powder-coat finish incorporates a rounded tube design for an aesthetically pleasing design, and a vandal-resistant access plate for added peace of mind.

### ALL-WEATHER CAPABILITIES

Fully engineered system with the pneumatic operated freeze-resistant valve installed below frost line to drain water to non-freezing depth allowing fountain to function year-round. Assembly can be lifted to surface and lowered back into casing for easy maintenance without disturbing the fountain.

### PUSH BUTTON

Polished chrome-plated push-button requires less than 5 lbs. (2.7 kg) of push force to activate.



## SPECIFICATIONS

Model 3380FR barrier-free freeze-resistant pedestal drinking fountain shall include an 18 gauge Type 304 Stainless Steel satin finish basin with integral swirl design, polished chrome-plated brass push-button, polished chrome-plated brass vandal-resistant bubbler head, chrome-plated brass vandal-resistant waste strainer, 11 gauge galvanized substrate steel pedestal with green powder-coating, integral mounting plate, and 1-1/2" O.D. tailpiece.

## OPTIONS

To see all options for this model, visit [www.hawsco.com](http://www.hawsco.com)

## APPLICATIONS

Perfect for either public or private outdoor settings, the 3380FR is a great fit in areas where aesthetics are important to the overall appeal of the architecture. Suitable in areas where weather conditions exist, this series stands strong as a nice addition to any community. Powder-coated finish helps to maintain the fountain's overall appeal so it remains looking as new as it did when it was installed. This type of pedestal drinking fountain may also be placed in a variety of settings such as: parks, schools, and other outdoor environments around office buildings where the temperature may drop into freezing conditions.

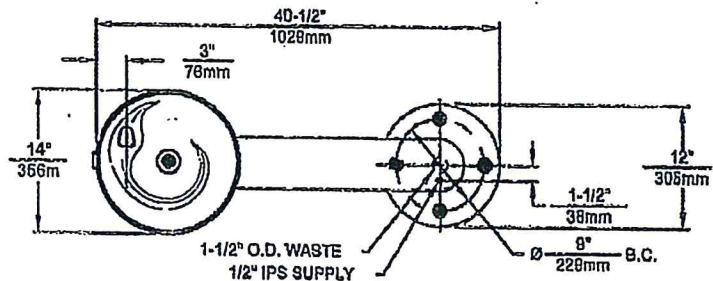
Model meets all current Federal Regulations for the disabled including those in the Americans with Disabilities Act. Haws manufactures drinking fountains and electric water coolers to be lead-free by all known definitions including NSF/ANSI Standard 61, Section 9, California Proposition 65, and the Federal Safe Drinking Water Act. Product is compliant to California Health and Safety Code 116875 (AB 1953-2006).



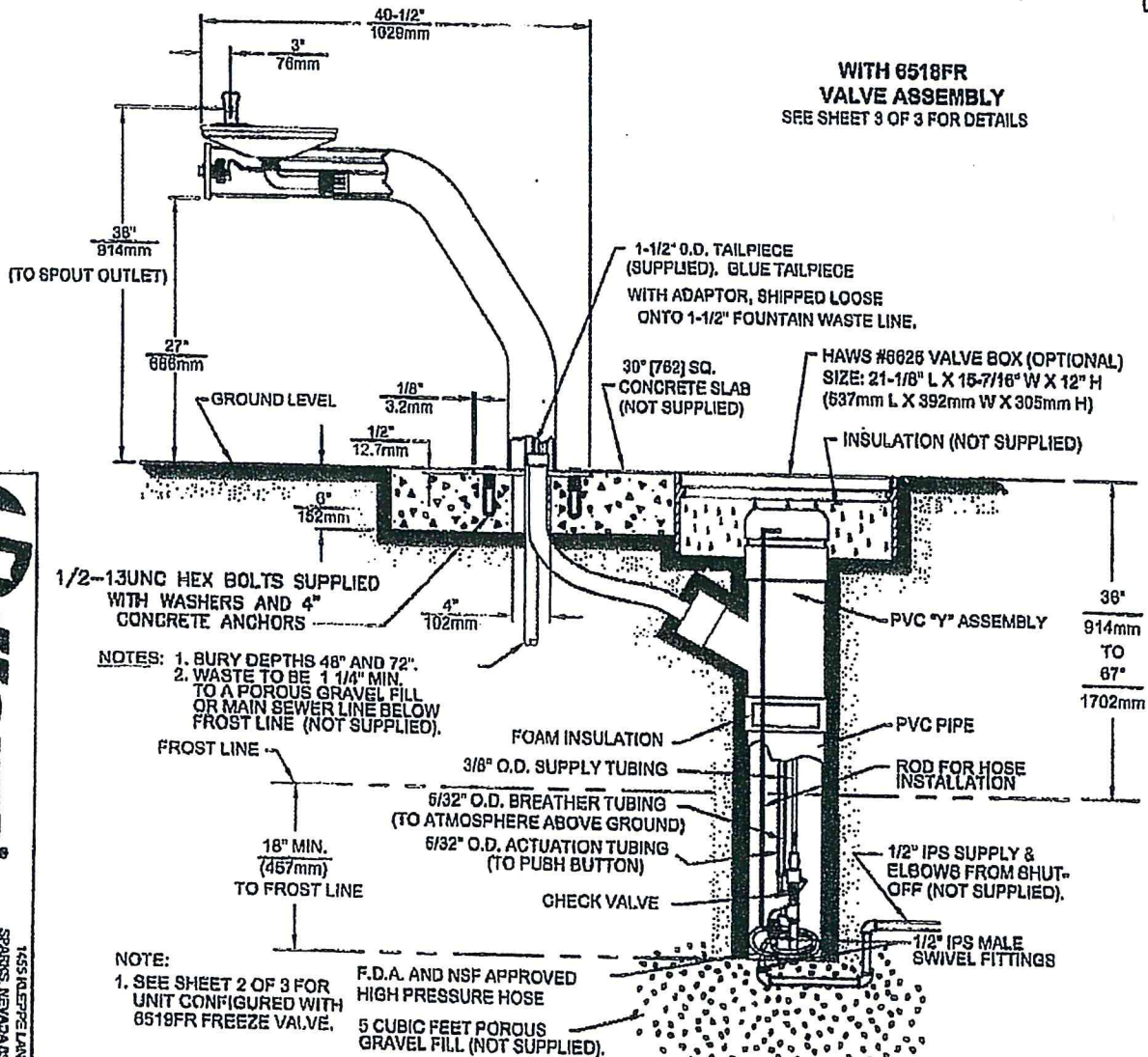
1455 Kleppe Lane :: Sparks, NV 89431 :: p. 775.359.4712 :: f. 775.359.7424 :: e. [info@hawsco.com](mailto:info@hawsco.com) :: [www.hawsco.com](http://www.hawsco.com) :: 03 January, 2013  
DISCLAIMER: Continued product improvements make specifications subject to change without notice. Check [www.hawsco.com](http://www.hawsco.com) for the latest product information and updates.

41/3

# **3380FR/3380GFR WITH 6518FR** (SEE SHEET 2 OF 3 FOR 6519FR INSTALLATION)



**WITH 6518FR  
VALVE ASSEMBLY**  
SEE SHEET 3 OF 3 FOR DETAILS

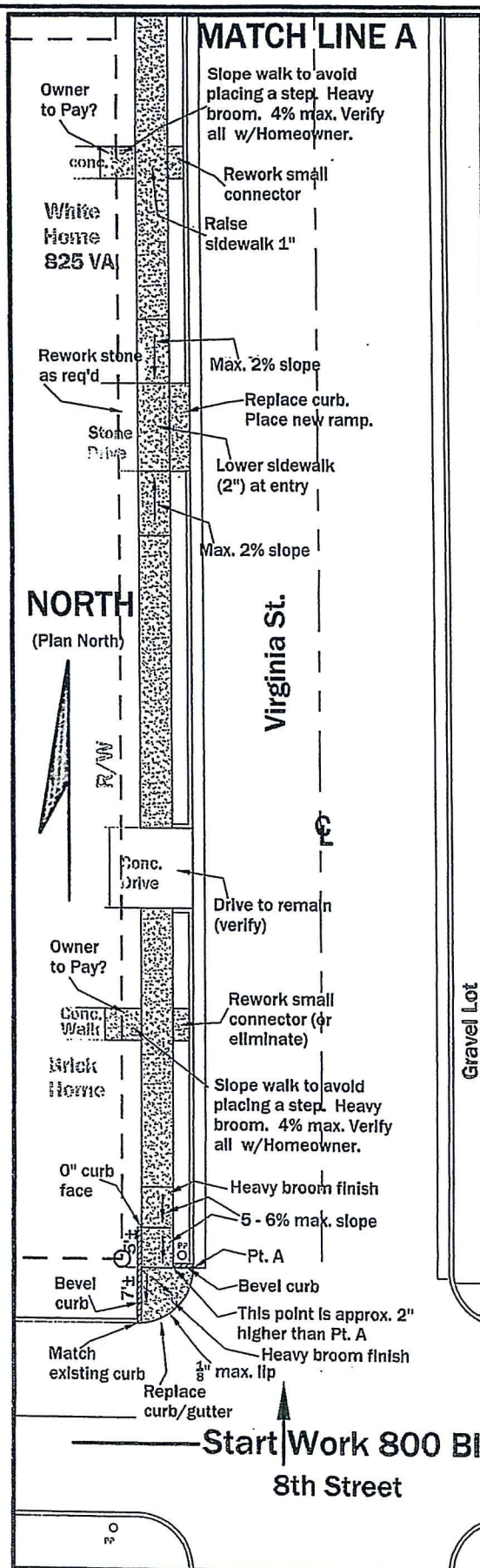
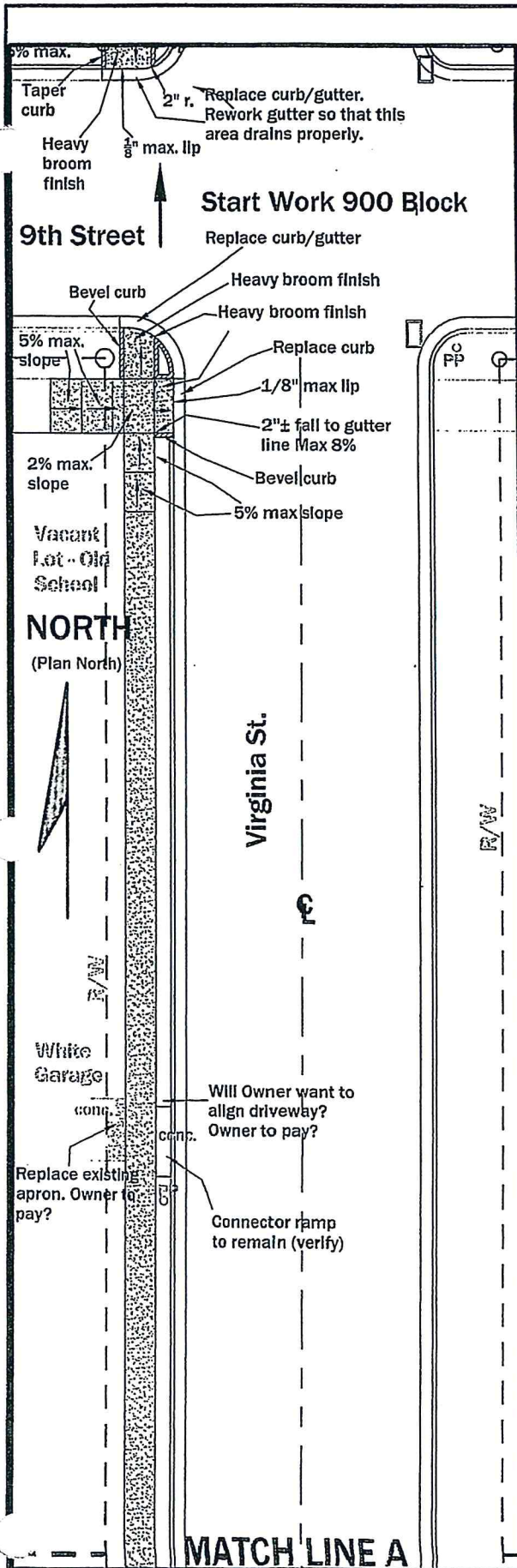


THIS DOCUMENT IS TRUE AND CORRECT AT TIME OF PUBLICATION. CONTAINED PRODUCT INFORMATION IS SUBJECT TO CHANGE WITHOUT NOTICE.

©2010 Haws Corporation - All Rights Reserved HAWS® and other trademarks used in these materials are the exclusive property of Haws Corporation.



#14



**Sidewalk Plan 800 Block**

1" = 20'

**Town of Ferdinand**  
Virginia Street Sidewalk Improvements  
800 Block - West side  
Ferdinand, Indiana

**Engineer Associates, Inc.**

645 Main Street, #201  
Tell City, Indiana 47586  
Telephone: 812-547-1100  
Cell: 812-719-8345  
Indy phone: 317-841-3113  
KLSimpsonPE@Comcast.net

Kenneth Leo Simpson, P.E.

Drawn: KLS

Drawing Date: 11/24/15

Revision Date:

**Plot Information:**

File Name: Ferd. Sdwk.Virginia St.

Plot Date:

CAD Operator: KLS

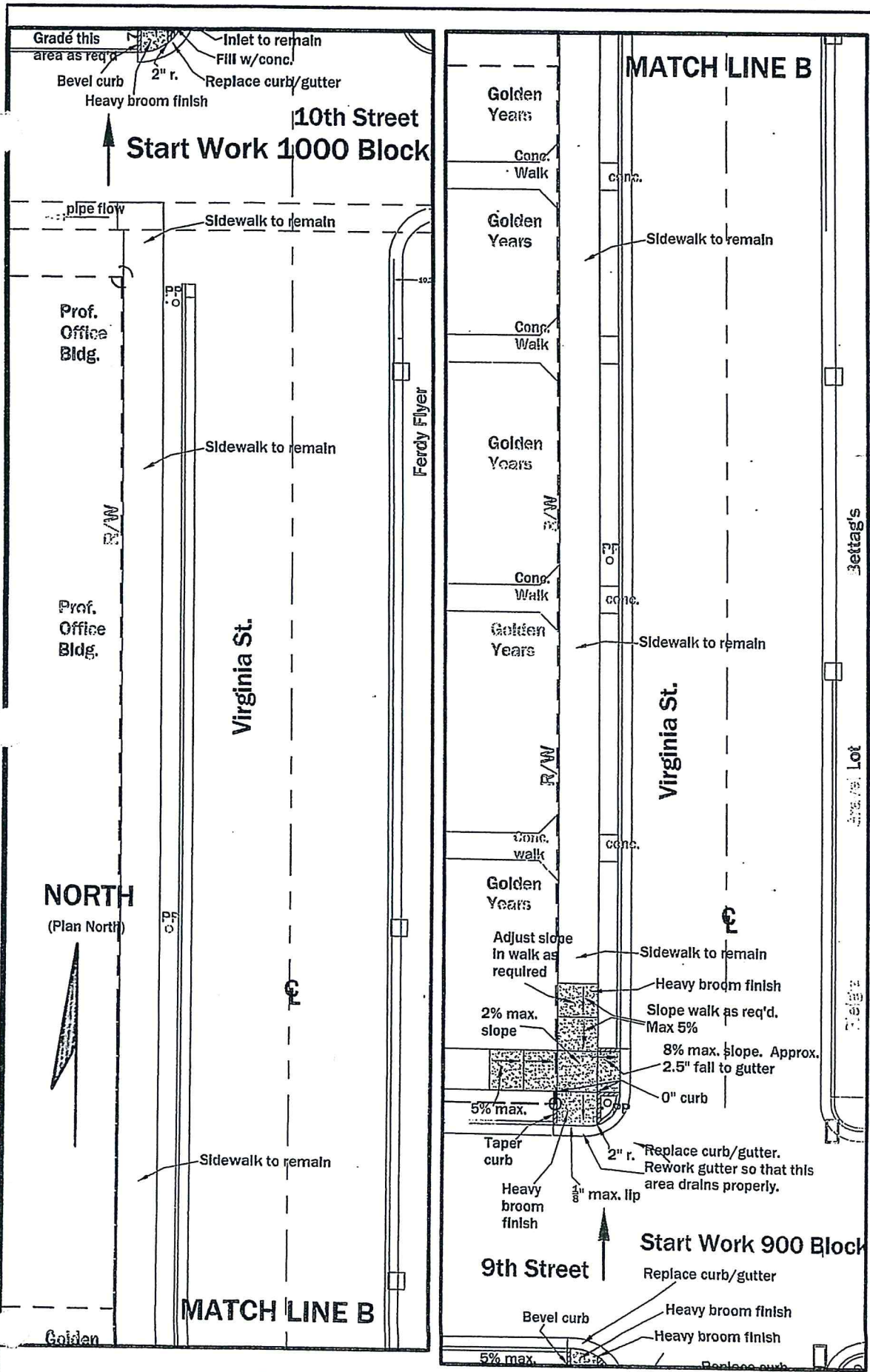


Seal

**C1**

Attachment #14





**Town of Ferdinand  
Virginia Street Sidewalk Improvements  
900 Block - West side  
Ferdinand, Indiana**

**Engineer Associates, Inc.**

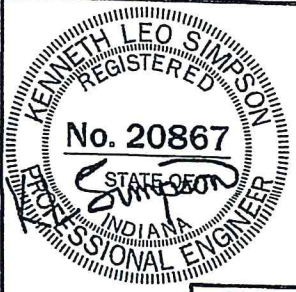
645 Main Street, #201  
Tell City, Indiana 47586  
Telephone: 812-547-1100  
Cell: 812-719-8345.  
Indy phone: 317-841-3113  
KLSimpsonPE@Comcast.net

**Kenneth Leo Simpson, P.E.**

Drawn: KLS  
Drawing Date: 11/24/15  
Revision Date:

### Plot Information:

File Name: Ferd. Sdwlk.Virginia St.  
Plot Date:  
CAD Operator: KLS

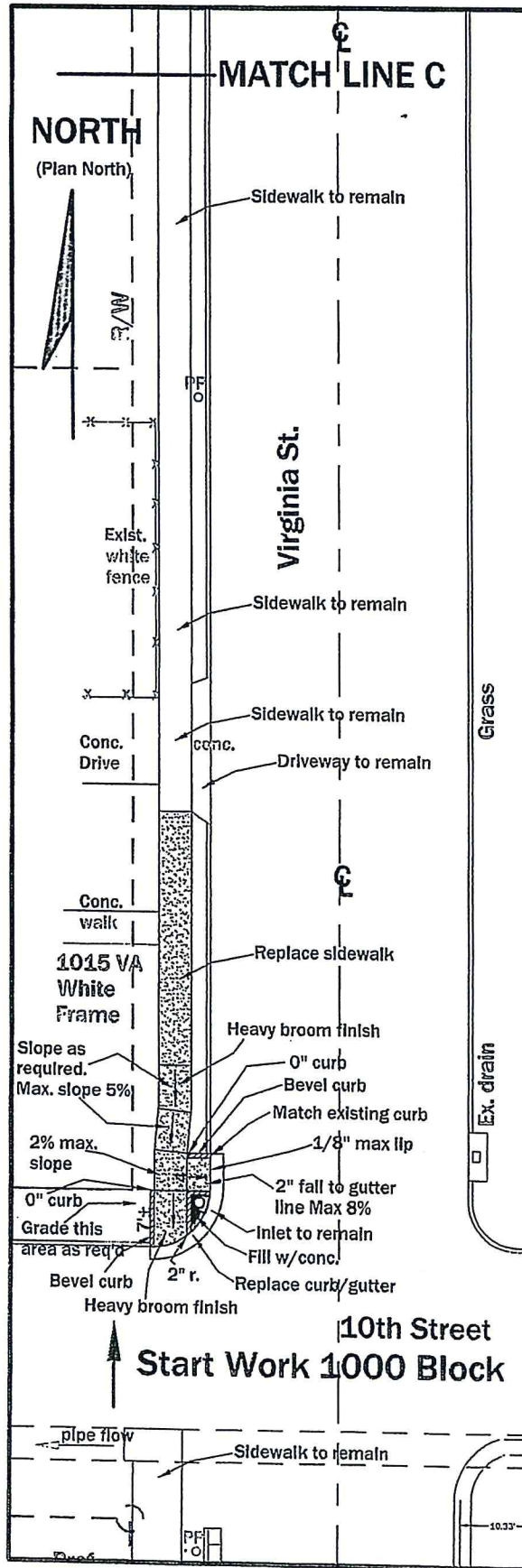
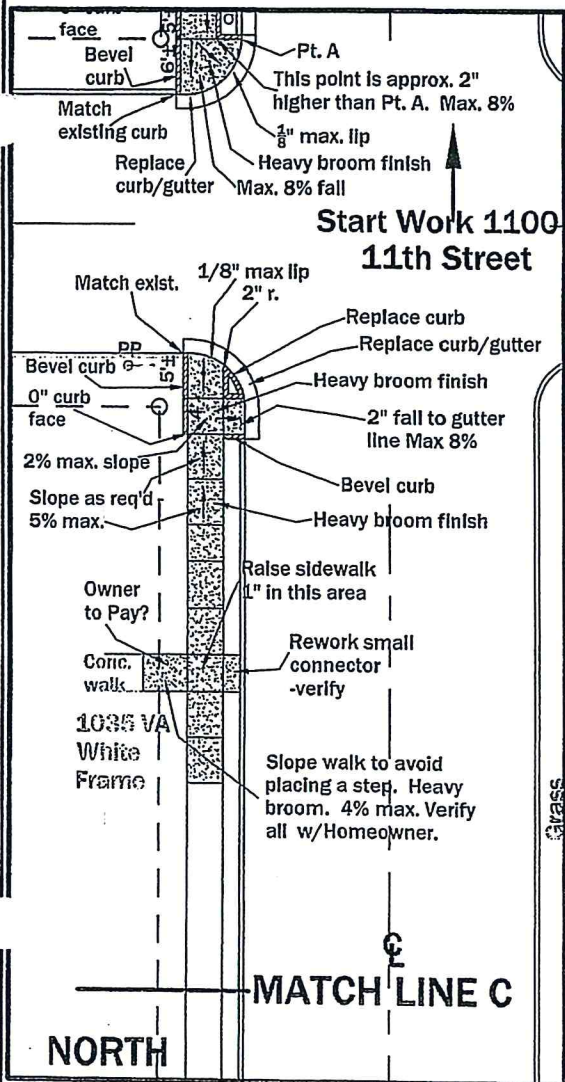


Seal

C2



# 16



## Sidewalk Plan 1000 Block

1" = 20'

**Town of Ferdinand**  
**Virginia Street Sidewalk Improvements**  
**1000 Block - West side**  
**Ferdinand, Indiana**

**Engineer Associates, Inc.**  
 645 Main Street, #201  
 Tell City, Indiana 47586  
 Telephone: 812-547-1100  
 Cell: 812-719-8345  
 Indy phone: 317-841-3113  
 KLSimpsonPE@Comcast.net

Kenneth Leo Simpson, P.E.

Drawn: KLS  
 Drawing Date: 11/24/15  
 Revision Date:

### Plot Information:

File Name: Ferd. Sdwk.Virginia St.

Plot Date:  
 CAD Operator: KLS



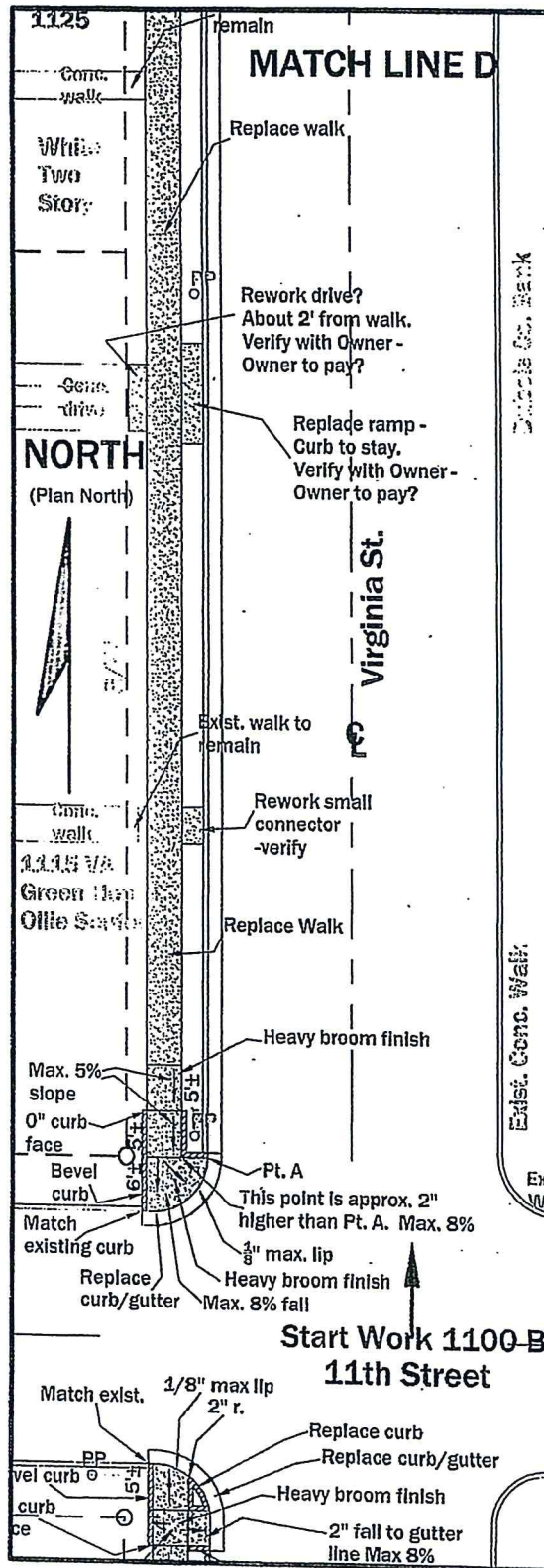
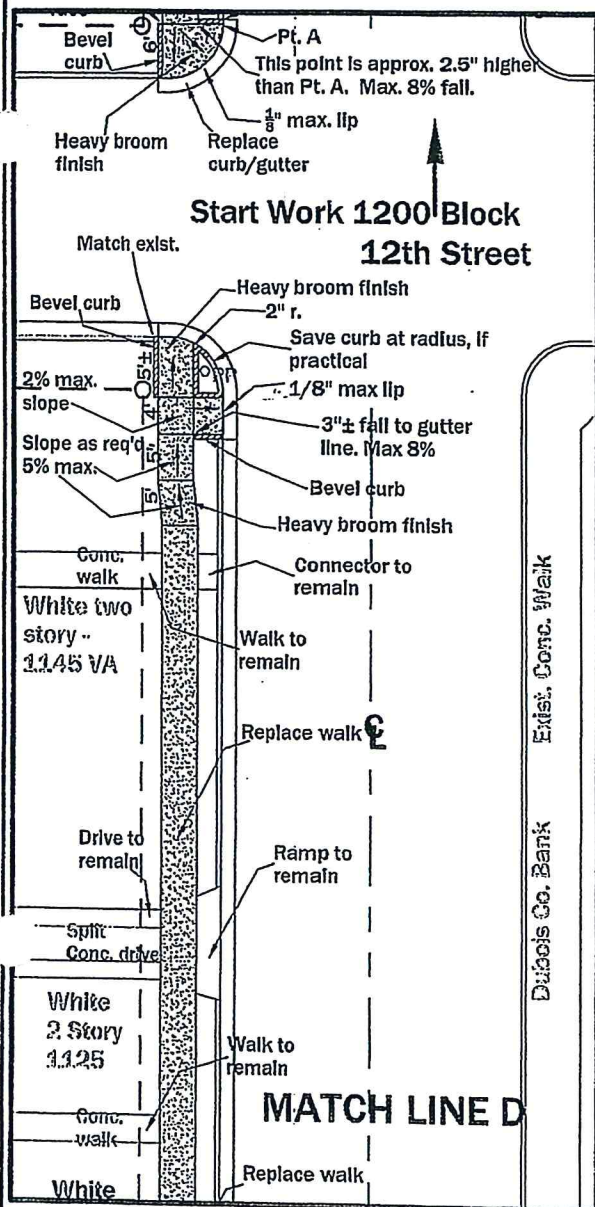
Seal

Sheet number

**C3**

Attachment # 16

#17



## Sidewalk Plan 1100 Block

1" = 20'

**Town of Ferdinand**  
**Virginia Street Sidewalk Improvements**  
**1100 Block - West side**  
**Ferdinand, Indiana**

**Engineer Associates, Inc.**  
 645 Main Street, #201  
 Tell City, Indiana 47586  
 Telephone: 812-547-1100  
 Cell: 812-719-8345  
 Indy phone: 317-841-3113  
 KLSimpsonPE@Comcast.net

Kenneth Leo Simpson, P.E.

Drawn: KLS  
 Drawing Date: 11/24/15  
 Revision Date:

### Plot Information:

File Name: Ferd, Sdwk, Virginia St.  
 Plot Date:  
 CAD Operator: KLS



C4

Attachment #17



#18

**ENGINEER ASSOCIATES, Inc.**

*Since 1990*

645 Main Street, Suite 201  
Tell City, Indiana 47586

Kenneth Leo Simpson, P.E.  
P.E. License in Indiana & Kentucky

(812) 547-1100  
e-mail: [klsimpsonpe@comcast.net](mailto:klsimpsonpe@comcast.net)

December 1, 2015

Town of Ferdinand  
2065 Main Street  
Ferdinand, IN 47532

Attn: Tom Lueken

Re: **Sidewalk replacement**  
**800 to 1600 Virginia Street**  
**Ferdinand, IN**

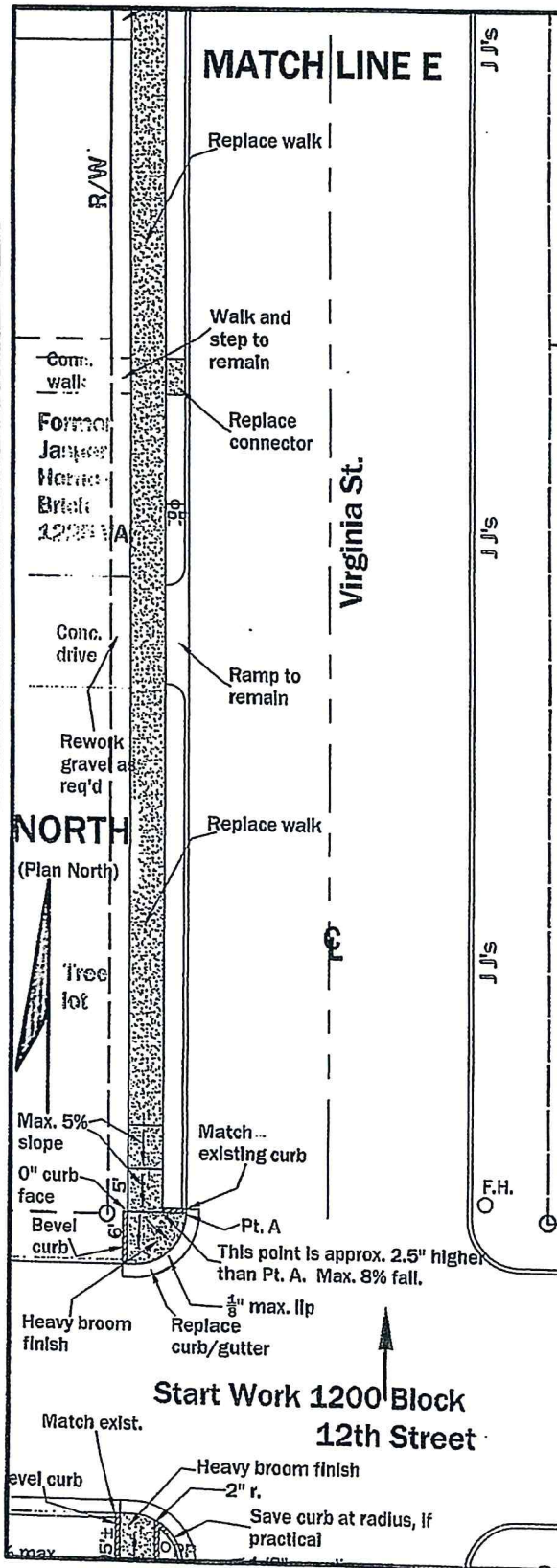
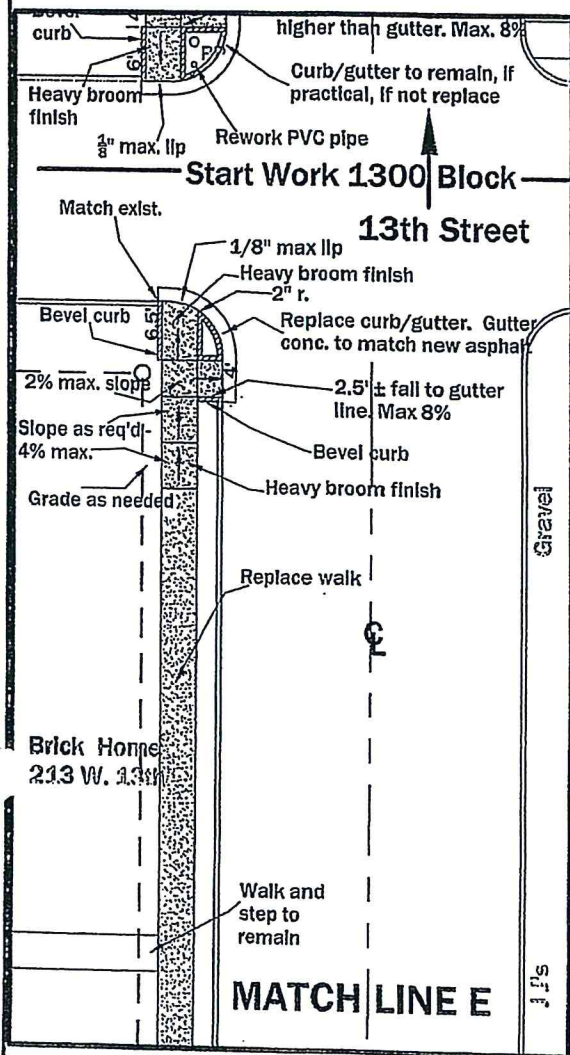
**INVOICE**

For engineering services, performed during the period October 30, 2015 through December 1, 2015, to provide a design for replacing the sidewalks along the West side of Virginia Street, including creating pages T1, C1 - C9, and associated services.

**Please remit    \$4,900.00**

Net due 30 days

Attachment #18



**Sidewalk Plan 1200 Block**  
1" = 20'

**Town of Ferdinand**  
**Virginia Street Sidewalk Improvements**  
**1200 Block - West side**  
**Ferdinand, Indiana**

**Engineer Associates, Inc.**  
645 Main Street, #201  
Tell City, Indiana 47586  
Telephone: 812-547-1100  
Cell: 812-719-8345  
Indy phone: 317-841-3113  
KLSimpsonPE@Comcast.net  
Kenneth Leo Simpson, P.E.

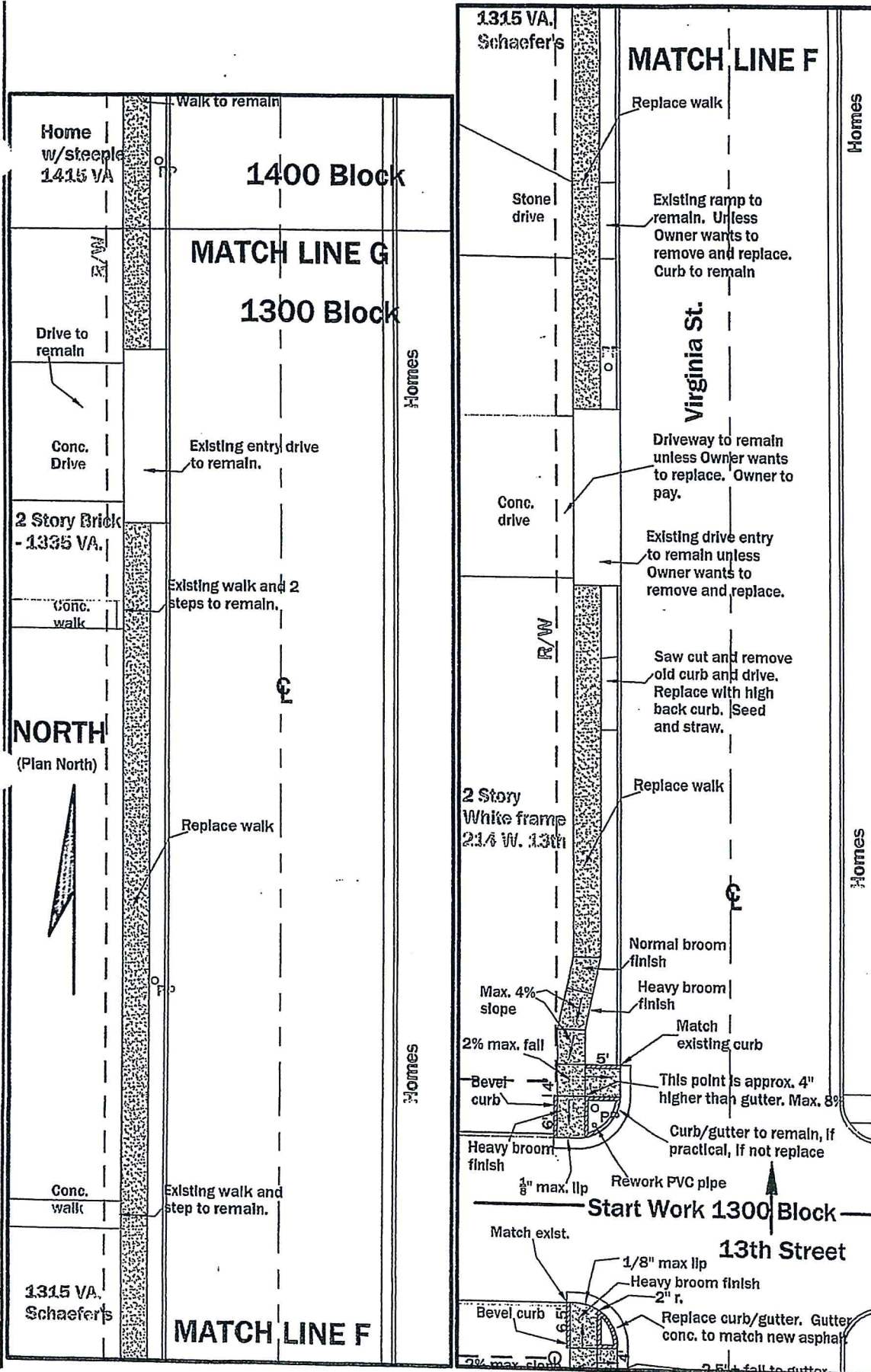
Drawn: KLS  
Drawing Date: 11/24/15  
Revision Date:

**Plot Information:**  
File Name: Ferd. Sdwk.Virginia St.  
Plot Date:  
CAD Operator: KLS



**C5**





**Sidewalk Plan 1300 Block**

1" = 20'

**Town of Ferdinand**  
**Virginia Street Sidewalk Improvements**  
**1300 Block - West side**  
**Ferdinand, Indiana**

**Engineer Associates, Inc.**  
 645 Main Street, #201  
 Tell City, Indiana 47586  
 Telephone: 812-547-1100  
 Cell: 812-719-8345  
 Indy phone: 317-841-3113  
 KLSimpsonPE@Comcast.net

Kenneth Leo Simpson, P.E.

Drawn: KLS  
 Drawing Date: 11/24/15  
 Revision Date:

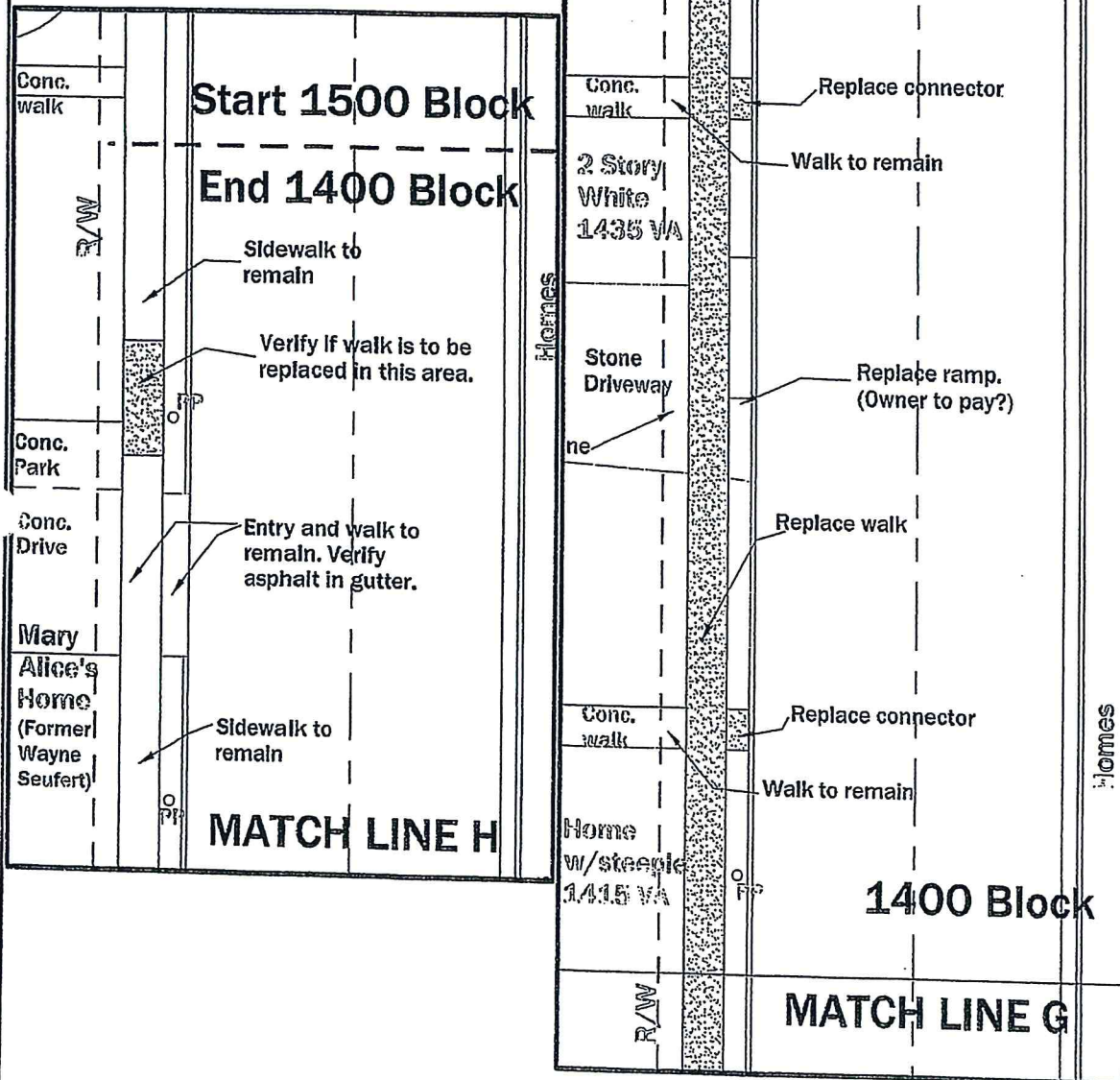
**Plot Information:**

File Name: Ferd. Sdwk.Virginia St.  
 Plot Date:  
 CAD Operator: KLS



**C6**

Alt Attachment #20



**Town of Ferdinand**  
 Virginia Street Sidewalk Improvements  
 1400 Block - West side  
 Ferdinand, Indiana

**Engineer Associates, Inc.**  
 645 Main Street, #201  
 Tell City, Indiana 47586  
 Telephone: 812-547-1100  
 Cell: 812-719-8345  
 Indy phone: 317-841-3113  
 KLSimpsonPE@Comcast.net  
 Kenneth Leo Simpson, P.E.

Drawn: KLS  
 Drawing Date: 11/24/15  
 Revision Date:

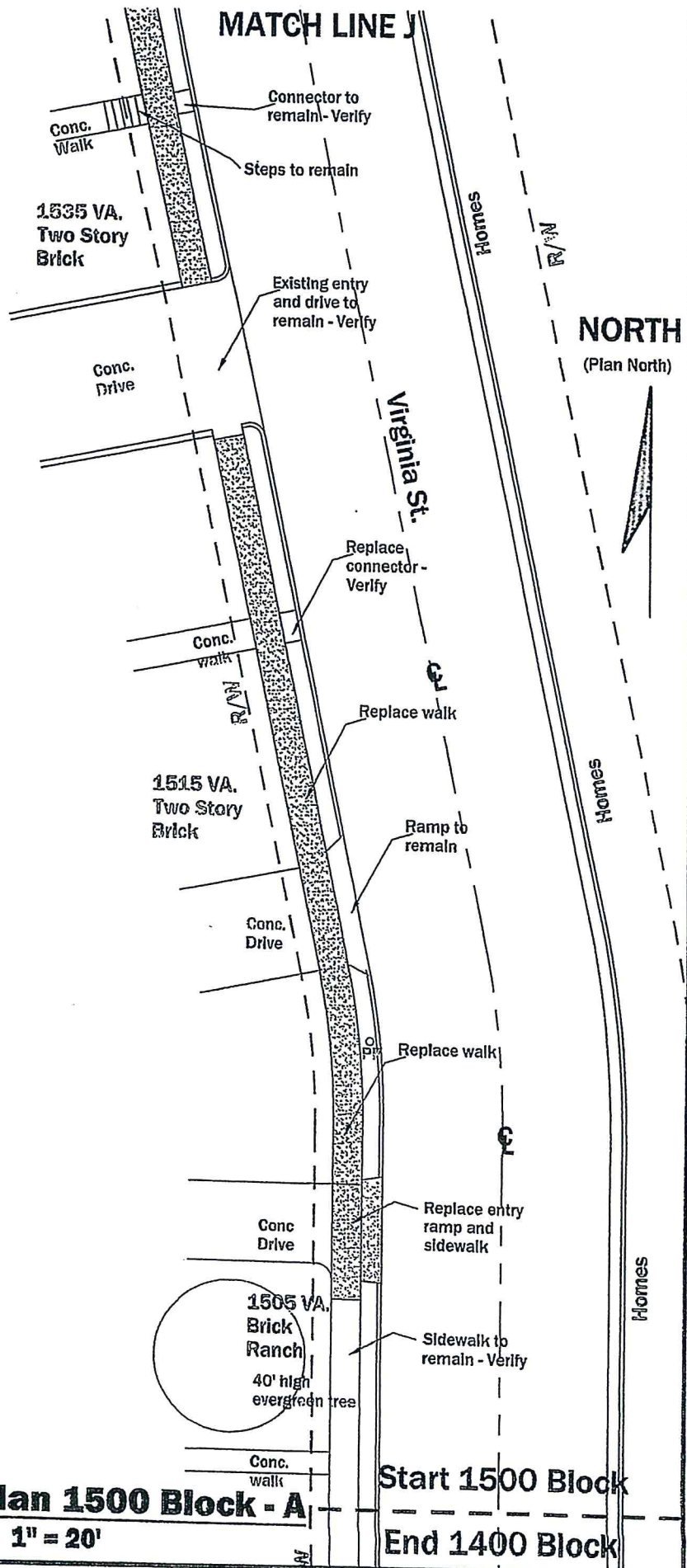
**Plot Information:**  
 File Name: Ferd. Sdwk.Virginia St.  
 Plot Date:  
 CAD Operator: KLS



**Sidewalk Plan 1400 Block**  
 1" = 20'



AIT #22



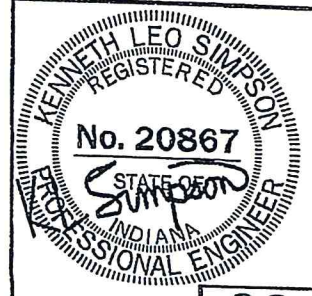
**Town of Ferdinand**  
**Virginia Street Sidewalk Improvements**  
**1500 Block (A) - West side**  
**Ferdinand, Indiana**

**Engineer Associates, Inc.**  
645 Main Street, #201  
Tell City, Indiana 47586  
Telephone: 812-547-1100  
Cell: 812-719-8345  
Indy phone: 317-841-3113  
KLSImpsonPE@Comcast.net

Kenneth Leo Simpson, P.E.

Drawn: KLS  
Drawing Date: 11/24/15  
Revision Date:

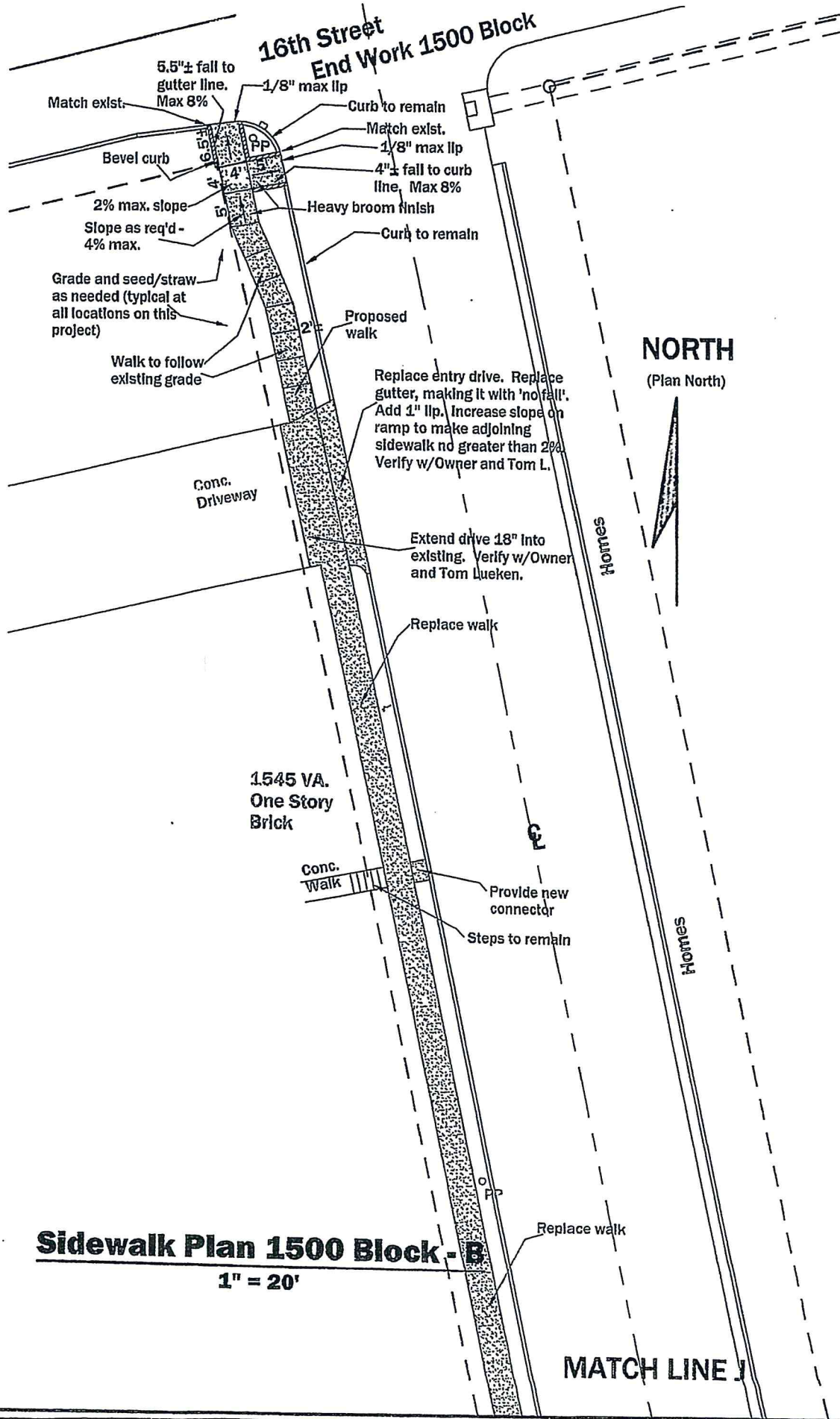
**Plot Information:**  
File Name: Ferd. Sdwk.Virginia St.  
Plot Date:  
CAD Operator: KLS



**C8**

AIT Attachment 22

Alt # 23



**Town of Ferdinand**  
**Virginia Street Sidewalk Improvements**  
**1500 Block (B) - West side**  
**Ferdinand, Indiana**

**Engineer Associates, Inc.**  
 645 Main Street, #201  
 Tell City, Indiana 47586  
 Telephone: 812-547-1100  
 Cell: 812-719-8345  
 Indy phone: 317-841-3113  
 KLSimpsonPE@Comcast.net  
 Kenneth Leo Simpson, P.E.

Drawn: KLS  
 Drawing Date: 11/24/15  
 Revision Date:

**Plot Information:**  
 File Name: Ferd. Sdwk.Virginia St.  
 Plot Date:  
 CAD Operator: KLS

**KENNETH LEO SIMPSON**  
 REGISTERED  
**No. 20867**  
 STATE OF INDIANA  
 PROFESSIONAL ENGINEER  
**C9**

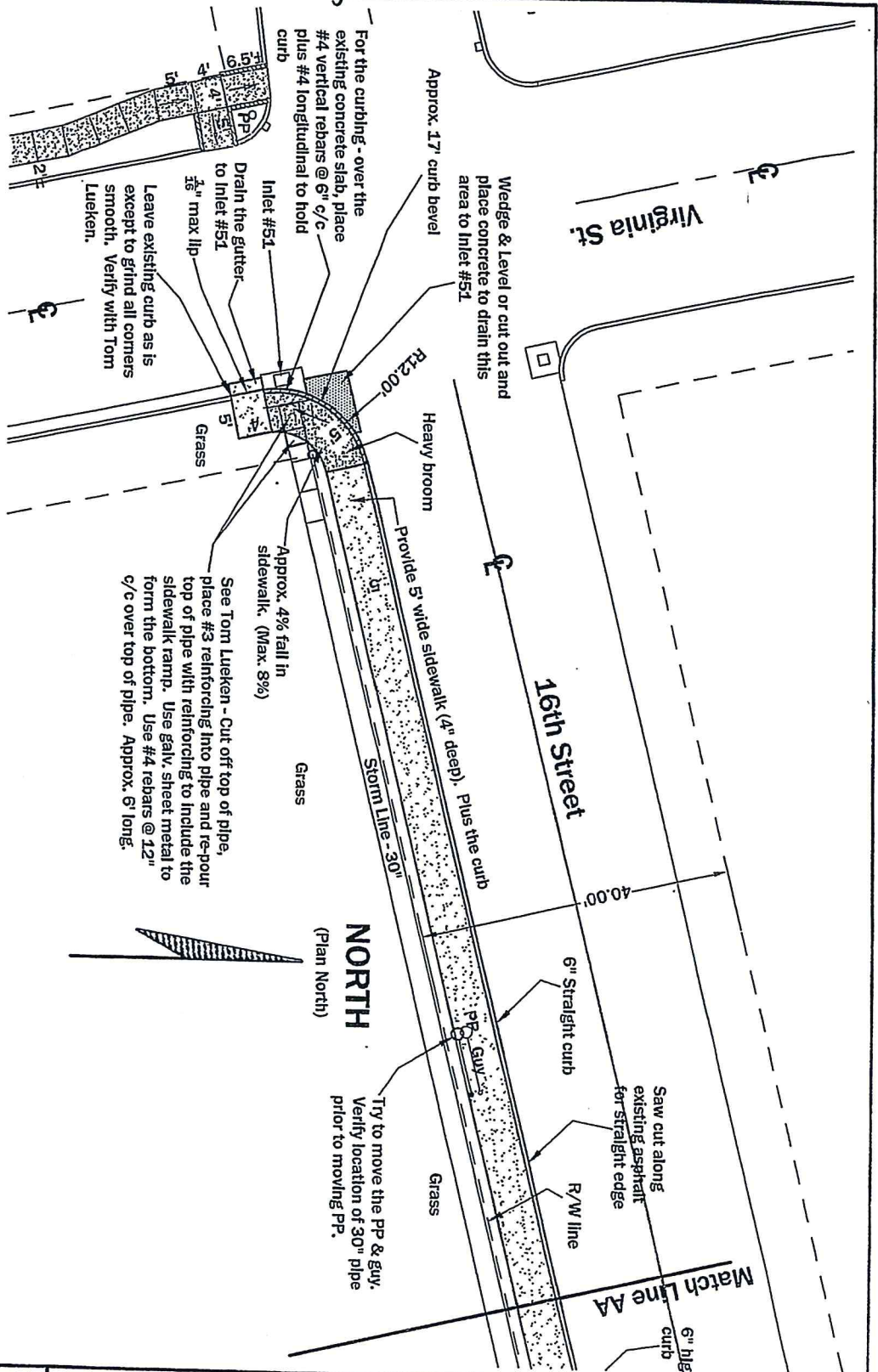
**Sidewalk Plan 1500 Block - B**  
 1" = 20'

**MATCH LINE**

Alt Attachment # 23



Project 2



**Sidewalk Plan - 16th Street (West End near Virginia Street)**

$$T'' = 20'$$

## Notes:

1. **Keep sidewalk  $\frac{1}{4}$ " above curb for setting.**
2. **Provide thin exp. jt. between sidewalk and curb**
3. **Sidewalk to be 4" deep over 2" comp. granular fill**

## Index of Drawings

**A1 West End near Virginia St**  
**A2 East End near Main Street**

**Town of Ferdinand**  
**16th Street Sidewalk Improvements**  
**Between Virginia Street & Main Street**  
**Ferdinand, Indiana** 04/1/24

Attachment  
24

**Engineer Associates, Inc.**

645 Main Street, #201  
Tell City, Indiana 47586  
Telephone: 812-547-1100  
Cell: 812-719-8345  
Indy phone: 317-841-3113  
KLSimpsonPE@Comcast.net

**Kenneth Leo Simpson, P.E.**

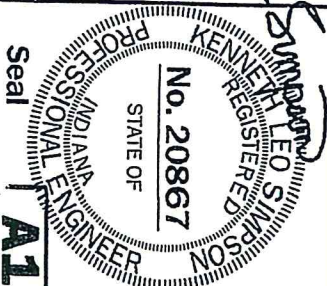
Drawn: KLS

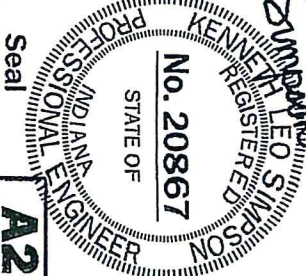
**Drawing Date:** 5/25/16

Revision Date:

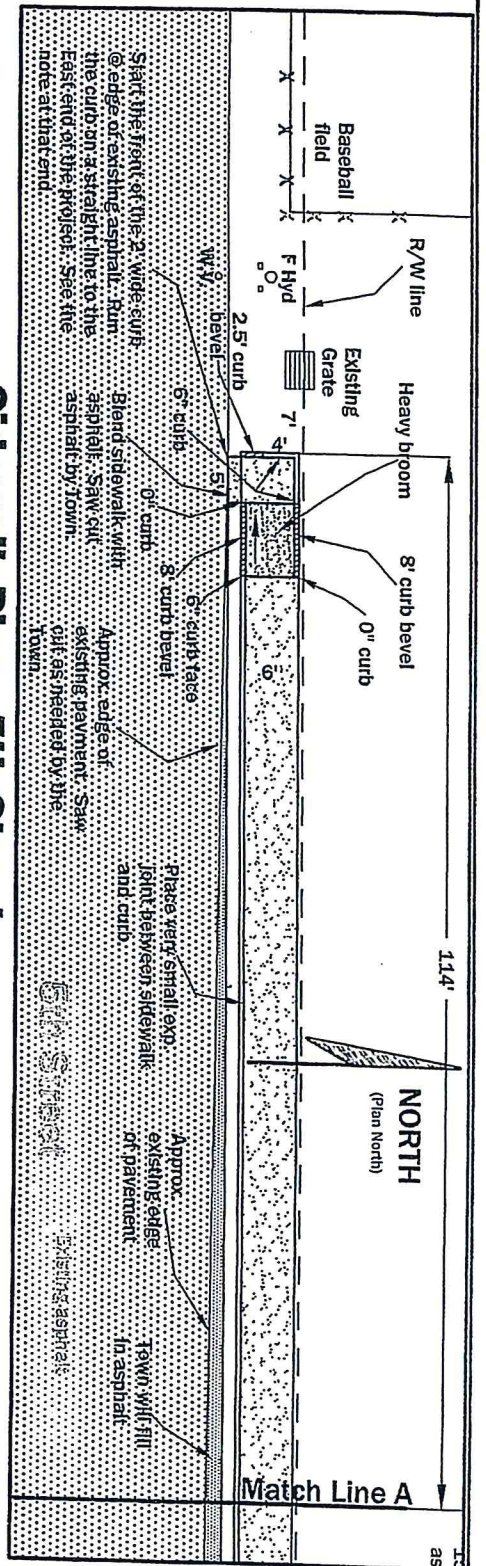
### Plot Informations:

File Name: Ferd. 16th St. Sdwk



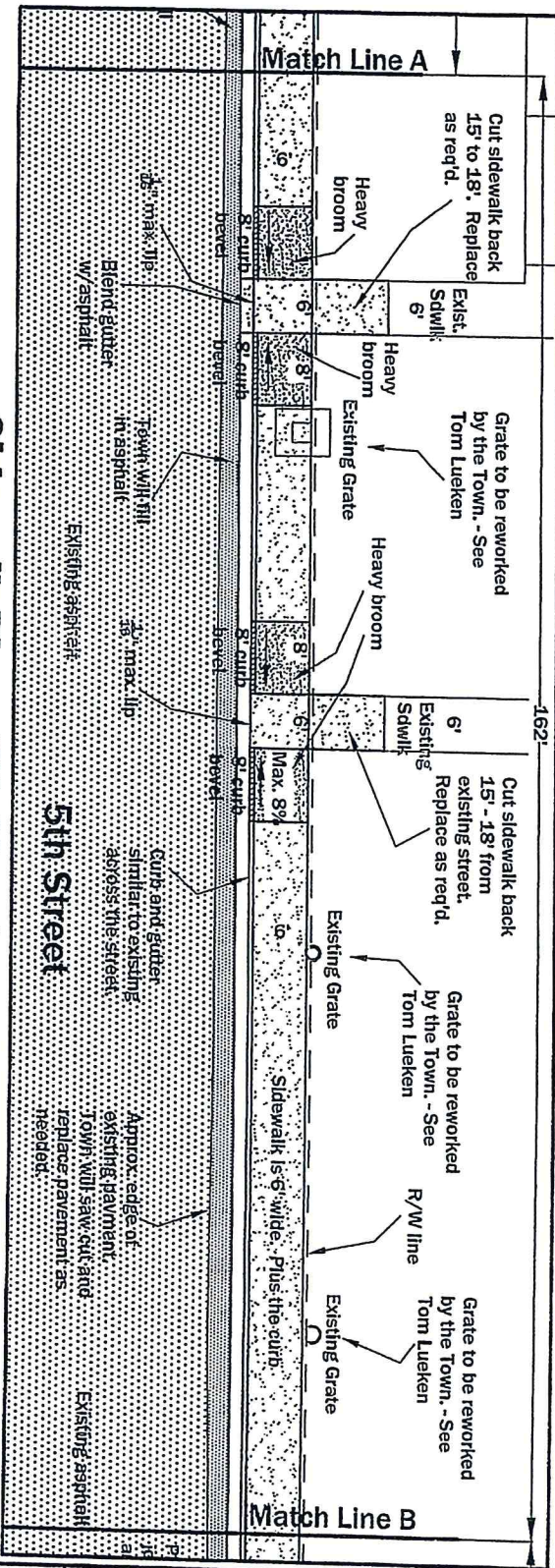






**Sidewalk Plan - 5th Street (Part 1 of 4)**

1" = 20'



**Sidewalk Plan - 5th Street (Part 2 of 4)**

1" = 20'

**Notes:**

1. Keep sidewalk  $\frac{1}{4}$ " above curb for setting.
2. Provide thin exp. ft. between sidewalk and curb
3. Sidewalk to be 4" deep over 2" comp. granular fill

**Index of Drawings**

- C1** Part 1 of 4 and 2 of 4  
**C2** Part 3 of 4 and 4 of 4

**Town of Ferdinand**  
**5th Street Sidewalk Improvements**  
**Near 5th Street Park**  
**Ferdinand, Indiana**

*Attachment #26*

**Engineer Associates, Inc.**  
 645 Main Street, #201  
 Tell City, Indiana 47586  
 Telephone: 812-547-1100  
 Cell: 812-719-8345  
 Indy phone: 317-841-3113  
 KLSimpsonPE@Comcast.net

Kenneth Leo Simpson, P.E.

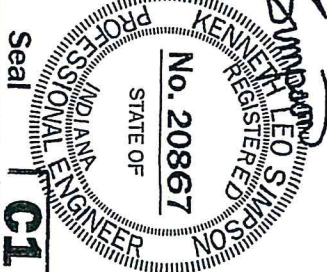
Drawn: KLS

Drawing Date: 5/24/16

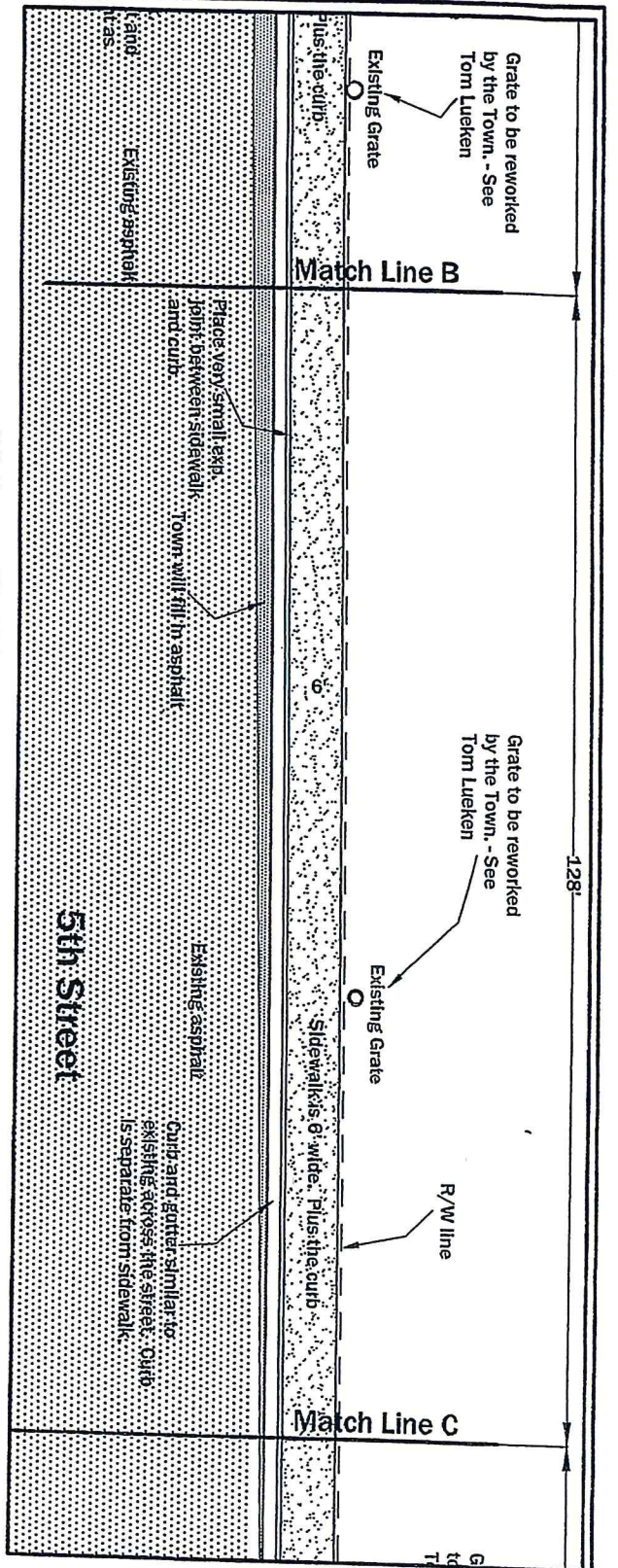
Revision Date:

Plot Information:

File Name: Ferd. 5th St. Sidwk

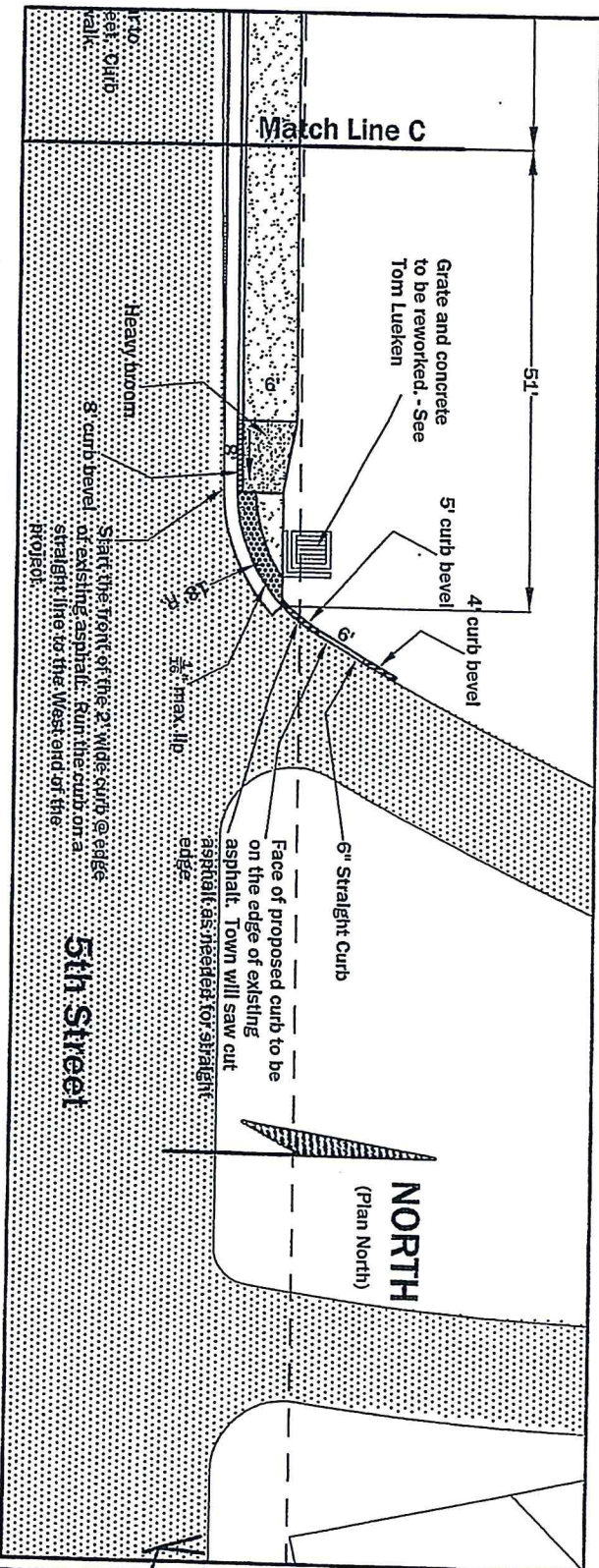






**Sidewalk Plan - 5th Street (Part 3 of 4)**

1" = 20'



**Sidewalk Plan - 5th Street (Part 4 of 4)**

1" = 20'

**Town of Ferdinand**  
**5th Street Sidewalk Improvements**  
**Near 5th Street Park**  
**Ferdinand, Indiana**

*Attachment #27*

**Engineer Associates, Inc.**

645 Main Street, #201

Tell City, Indiana 47586

Telephone: 812-547-1100

Cell: 812-719-8345

Indy phone: 317-841-3113

KL SimpsonPE@Comcast.net

Kenneth Leo Simpson, P.E.

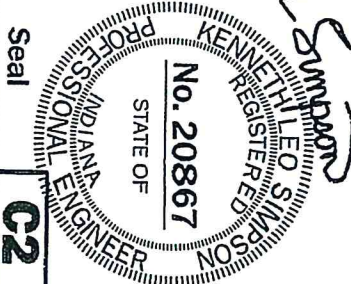
Drawn: KLS

Drawing Date: 5/24/16

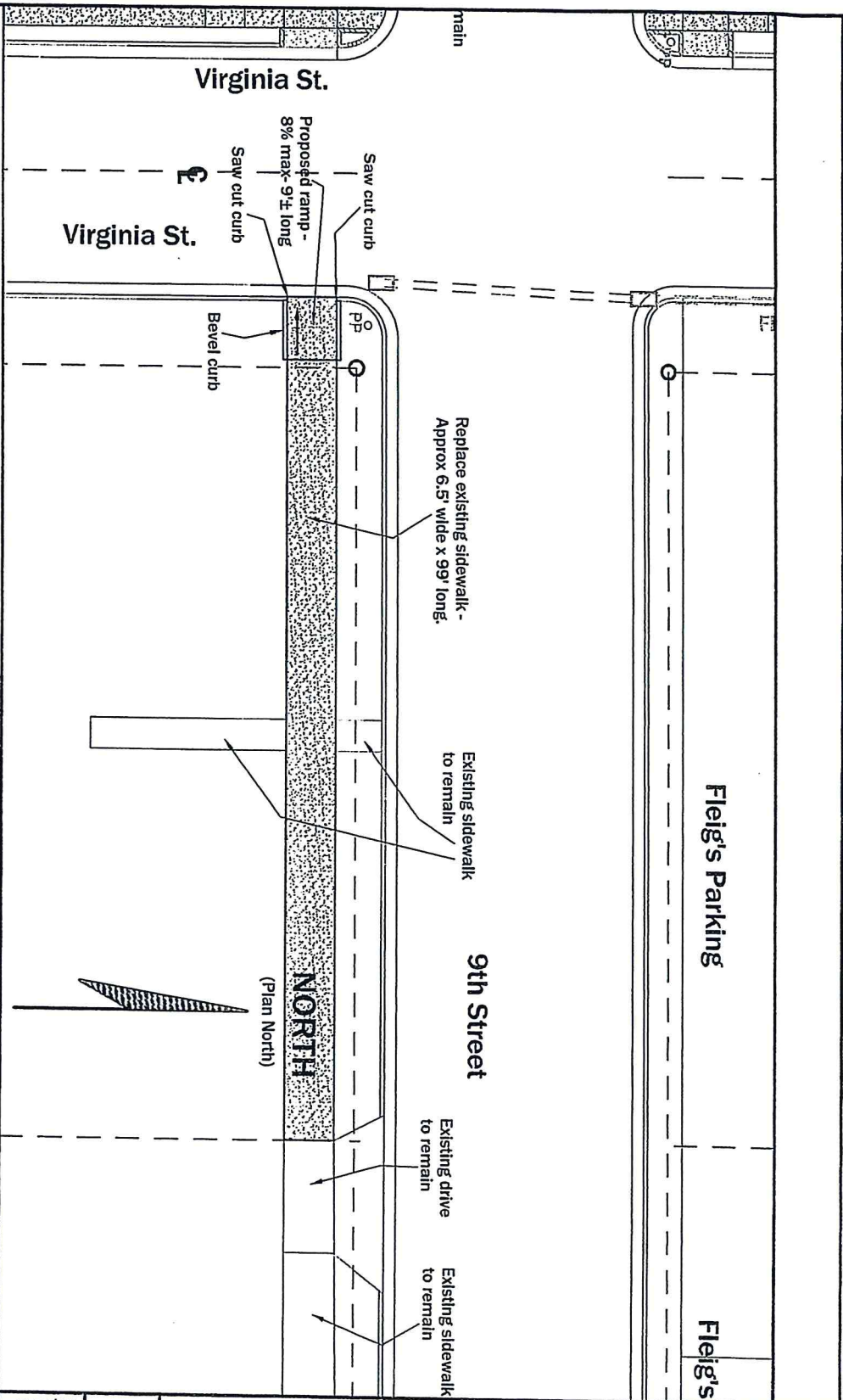
Revision Date:

Plot Information:

File Name: Ferd. 5th St. Sidwk







# **Sidewalk Plan - Along 9th Street from Virginia to the East**

1" = 20'

Attachment #28

## **Index of drawings**

- C1 Along 9th St, from VA St. to the East
- C2 Along 9th St, from VA St. West to Missouri St
- C3 Along 9th Street, from VA St. to 140' East
- C4 Along Missouri Street from 7th to 8th Street

**Town of Ferdinand**  
**Sidewalks - 9th & VA, 8th & VA,**  
**7th to 8th on Missouri**  
**Ferdinand, Indiana**

**Engineer Associates, Inc.**

645 Main Street, #201  
 Tell City, Indiana 47586  
 Telephone: 812-547-1100  
 Cell: 812-719-8345  
 Indy phone: 317-841-3113  
 KLSimpsonPE@Comcast.net

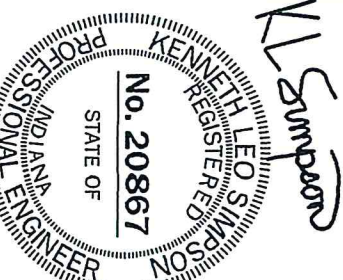
Kenneth Leo Simpson, P.E.

Drawn: KLS

Drawing Date: 2/7/18

### **Plot Information:**

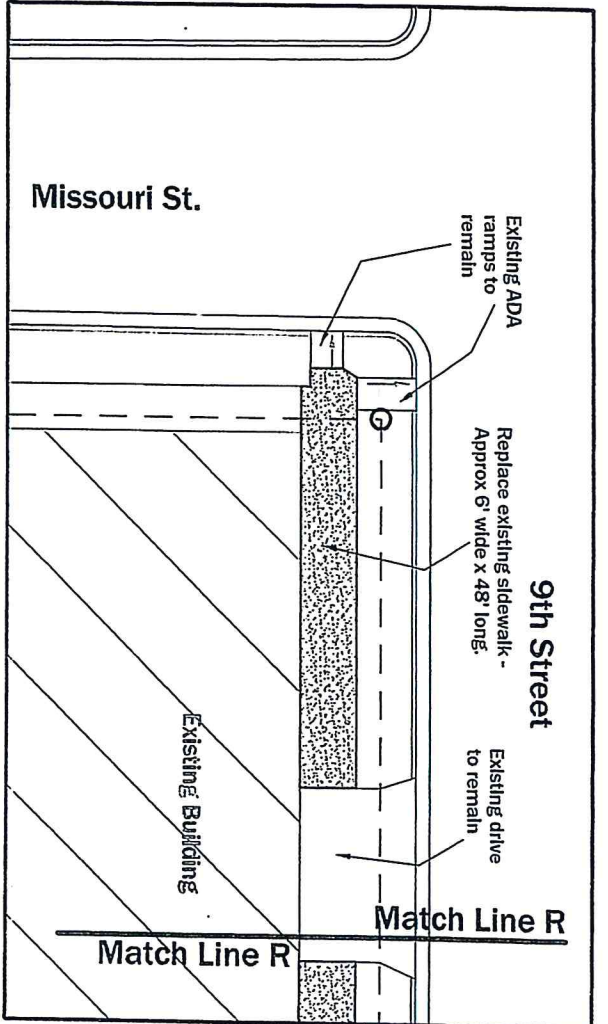
File Name: Ferid.Misc. Sidwalks  
 CAD Operator: KLS



Seal

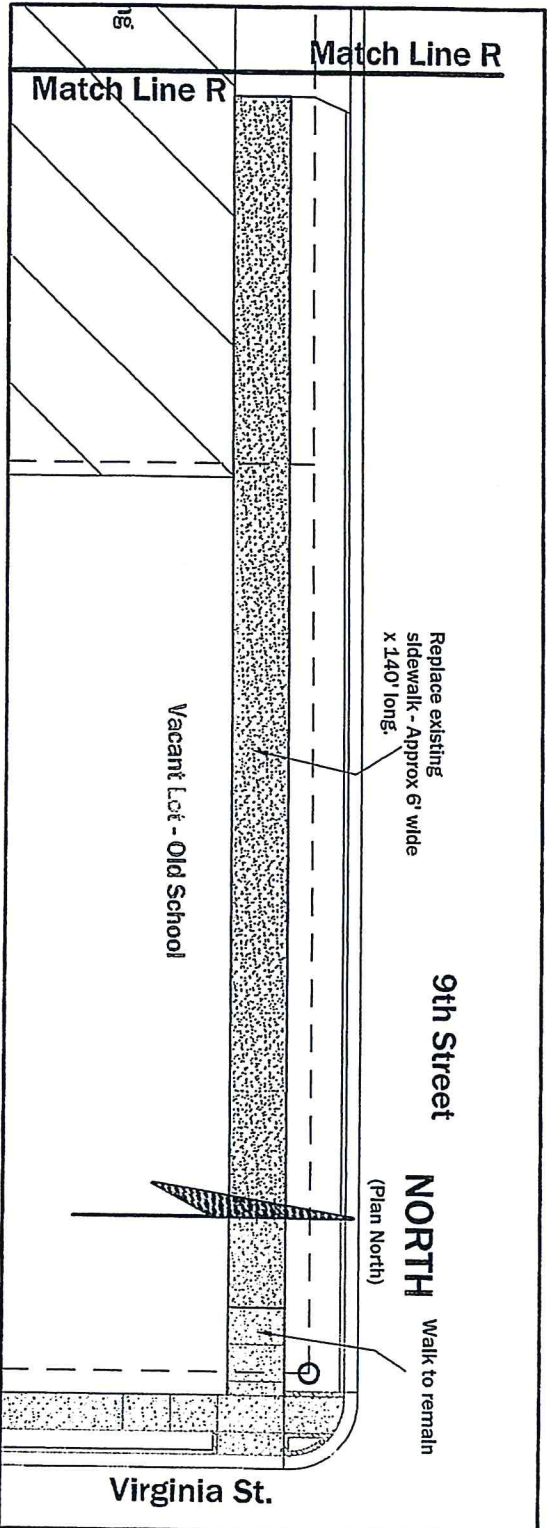
Sheet number

**C1**



**Sidewalk Plan - Along 9th Street continue West to Missouri**

1" = 20'



**Sidewalk Plan - Along 9th Street from Virginia. Go West 140'**

1" = 20'

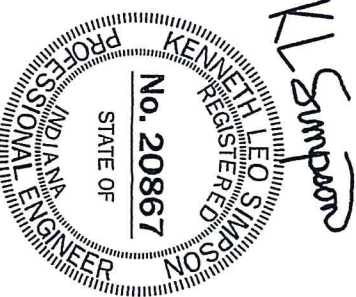
**Town of Ferdinand**  
Sidewalks - 9th & VA, 8th & VA,  
7th to 8th on Missouri  
Ferdinand, Indiana

**Engineer Associates, Inc.**  
645 Main Street, #201  
Tell City, Indiana 47586  
Telephone: 812-547-1100  
Cell: 812-719-8345  
Indy phone: 317-844-3113  
KLSimpsonPE@Comcast.net

Kenneth Leo Simpson, P.E.

Drawn: KLS  
Drawing Date: 2/7/18

**Plot Information:**  
File Name: Ferd.Misc. Sidwalks  
CAD Operator: KLS



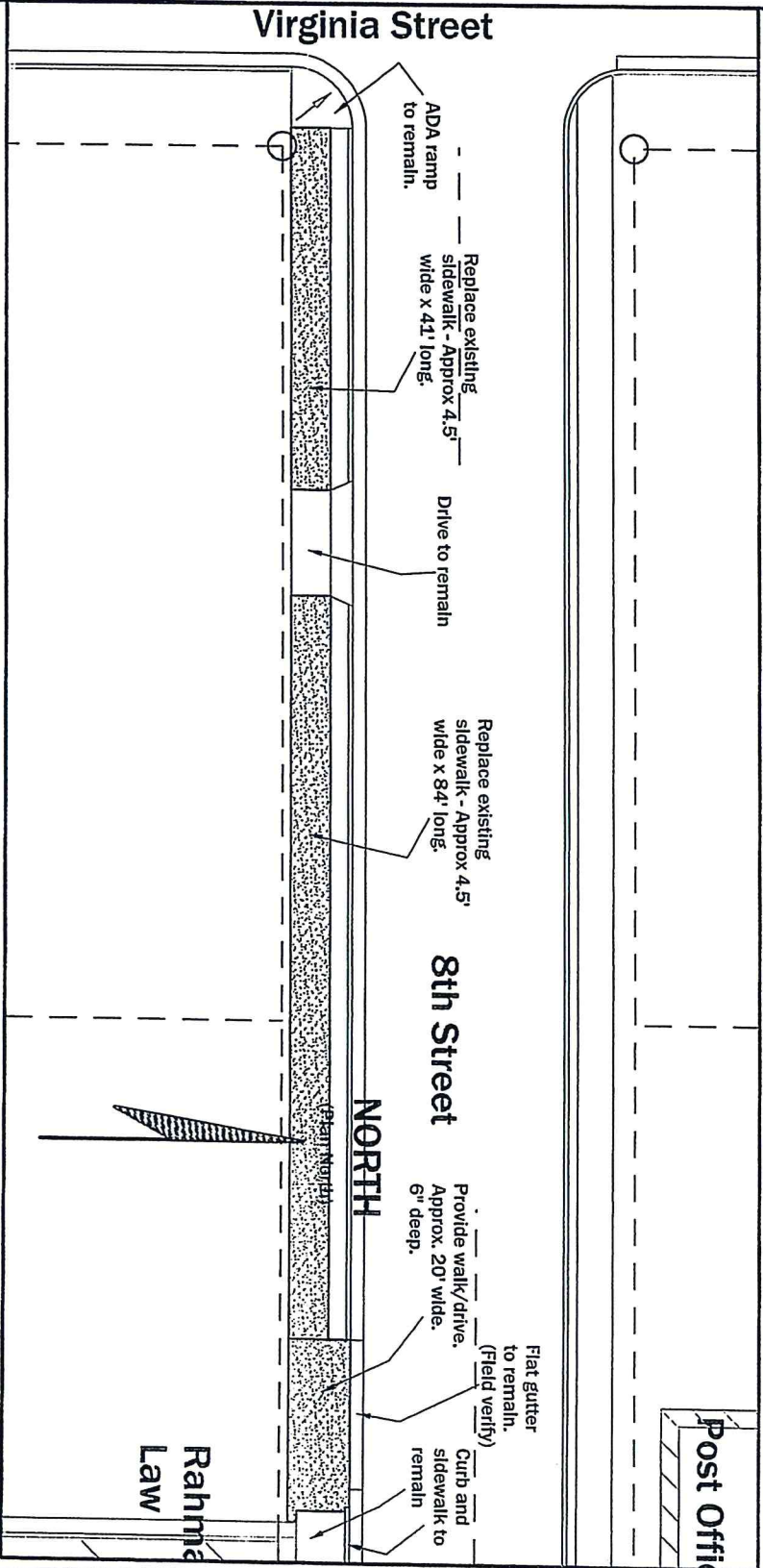
Seal

Sheet number

**C2**

Attachment # 29





# **Sidewalk Plan - Along 9th Street from Virginia, 140' to the East**

1" = 20'

Attachment # 30

Rahma Law

**Town of Ferdinand**  
**Sidewalks - 9th & VA, 8th & VA,**  
**7th to 8th on Missouri**  
**Ferdinand, Indiana**

**Engineer Associates, Inc.**

645 Main Street, #201

Tell City, Indiana 47586

Telephone: 812-547-4100

Cell: 812-719-8345

Indy phone: 317-841-3113

KL Simpson PE@Comcast.net

Kenneth Leo Simpson, P.E.

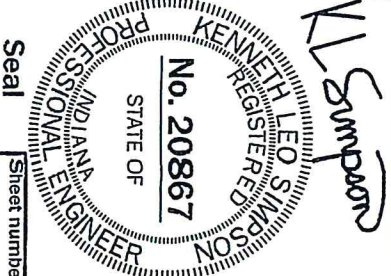
Drawn: KLS

Drawing Date: 2/7/18

## **Plot Information:**

File Name: Ferd.Misc. Sidwalks

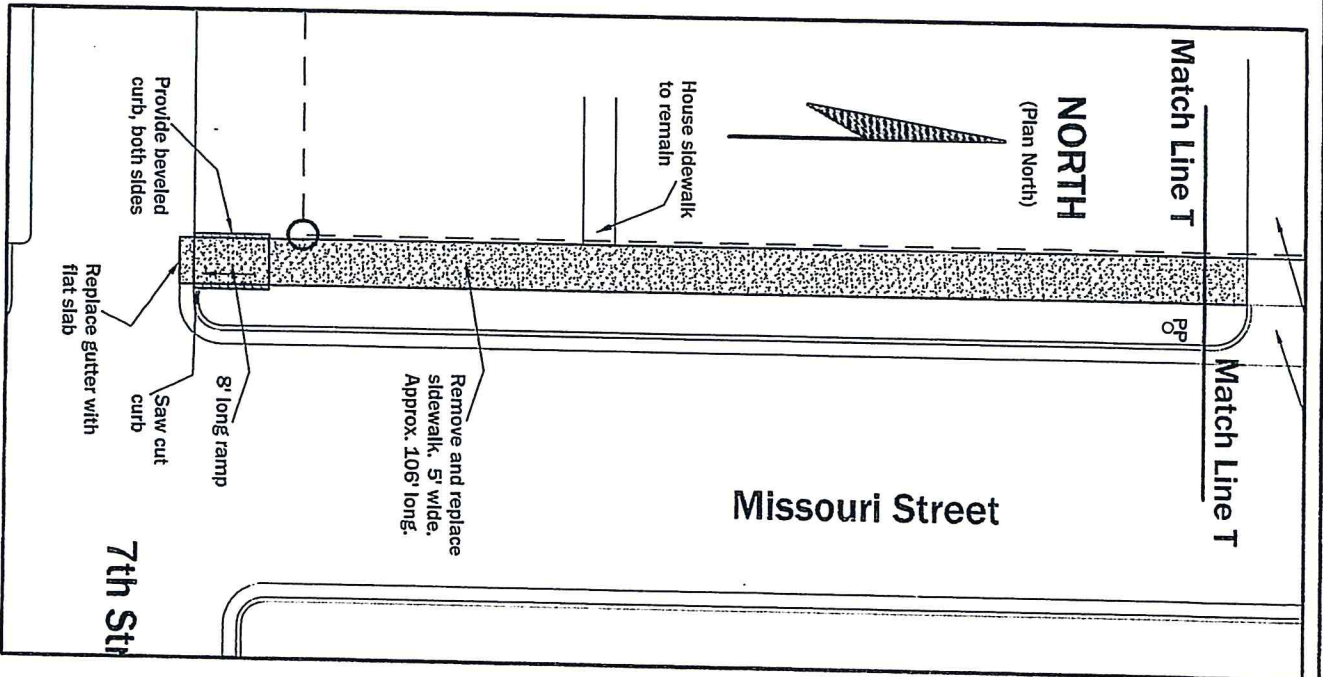
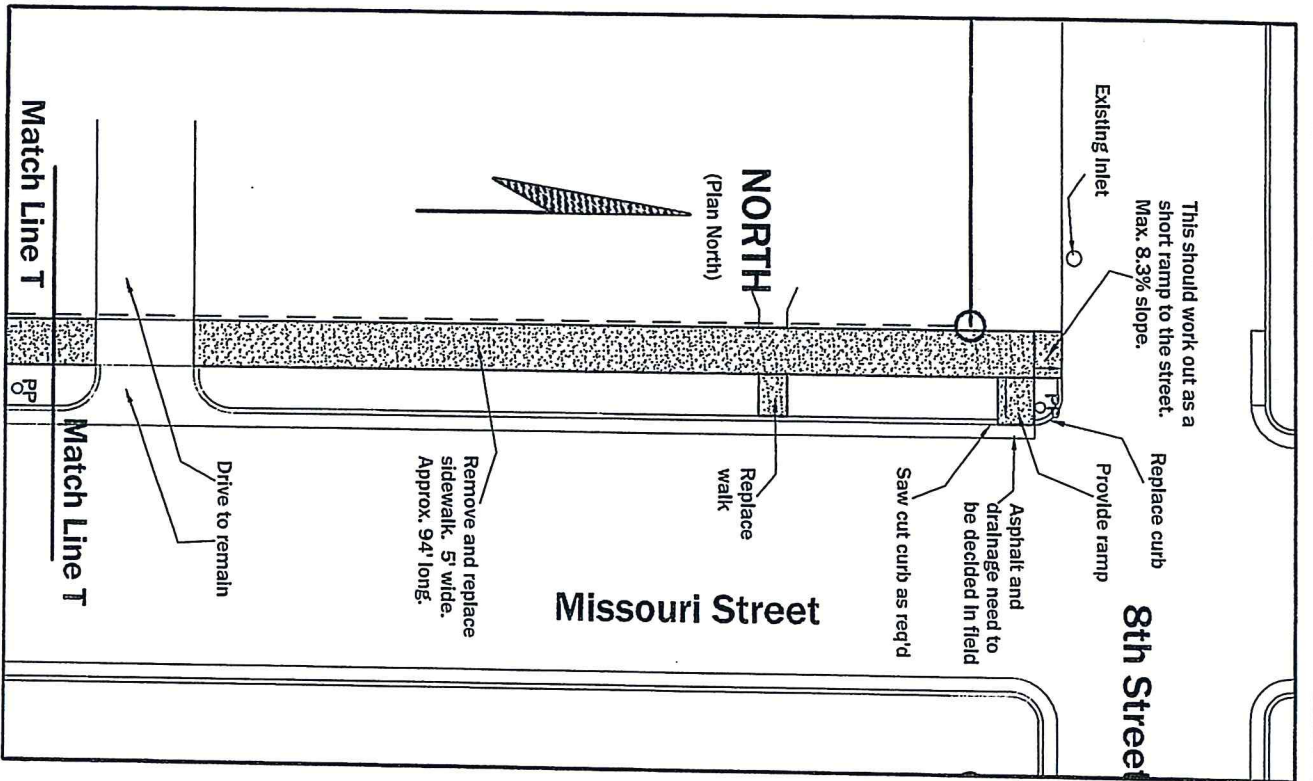
CAD Operator: KLS



Seal

Sheet number

**C3**



# **Sidewalk Plan - Along Missouri Street from 7th to 8th**

1" = 20'

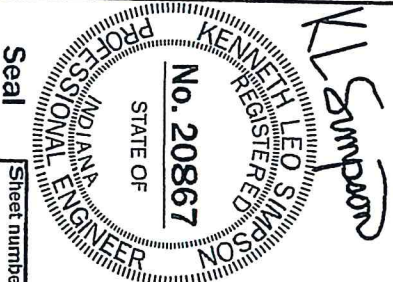
**Town of Ferdinand**  
**Sidewalks - 9th & VA, 8th & VA,**  
**7th to 8th on Missouri**  
**Ferdinand, Indiana**

**Engineer Associates, Inc.**  
 645 Main Street, #201  
 Tell City, Indiana 47586  
 Telephone: 812-547-1100  
 Cell: 812-719-8345  
 Indy phone: 317-841-3113  
 KLSimpsonPE@Comcast.net

Kenneth Leo Simpson, P.E.

Drawn: KLS  
 Drawing Date: 2/7/18

**Plot Information:**  
 File Name: Ferd.Misc. Sidwks  
 CAD Operator: KLS



Seal

Sheet number

**C4**

Attachment # 31



**ENGINEER ASSOCIATES, Inc.**

*Since 1990*

645 Main Street, Suite 201  
Tell City, Indiana 47586

Kenneth Leo Simpson, P.E.  
P.E. License in Indiana & Kentucky

(812) 547-1100  
e-mail: [ksimpsonpe@comcast.net](mailto:ksimpsonpe@comcast.net)

February 9, 2018

Town of Ferdinand  
2065 Main Street  
Ferdinand, IN 47532

Attn: Tom Lueken

**Re: Miscellaneous Sidewalk Replacements**  
**8<sup>th</sup> Street, 9<sup>th</sup> Street, Missouri Street**  
**Ferdinand, IN**

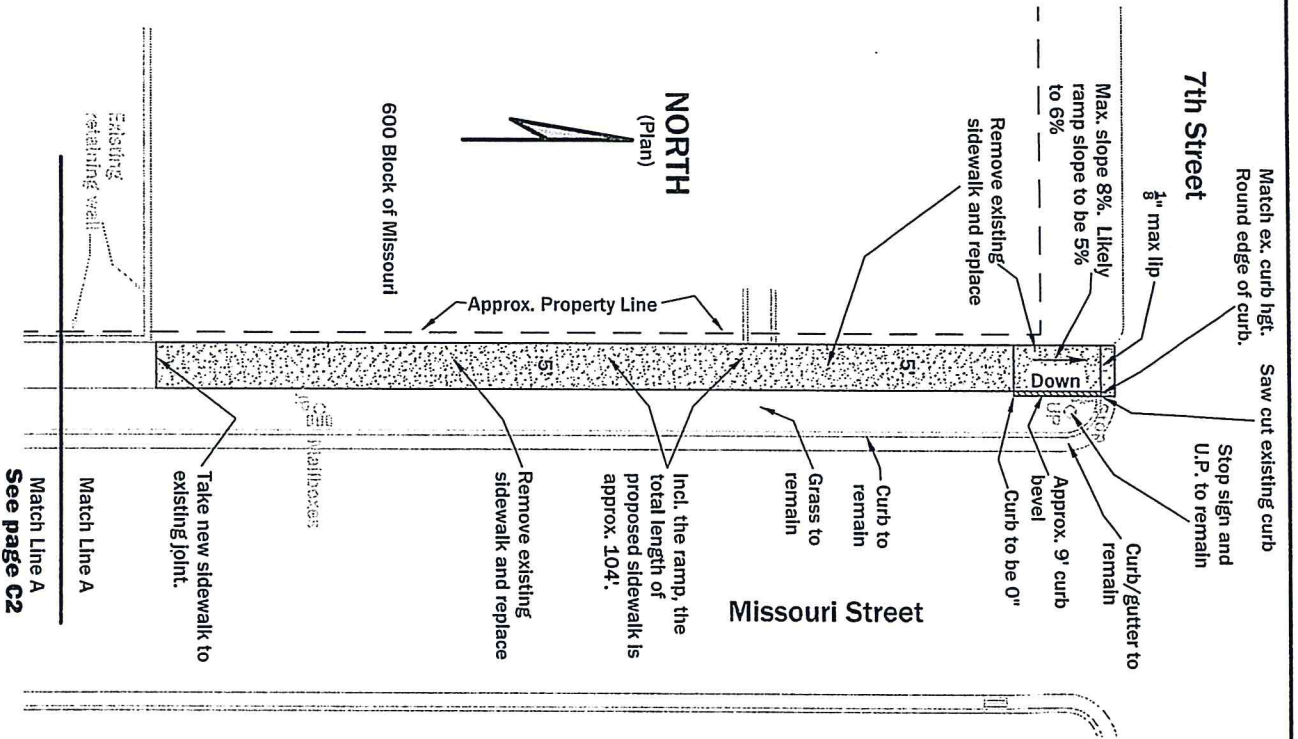
**INVOICE**

For engineering services performed, on the referenced project, during the period February 5<sup>th</sup> through 9<sup>th</sup> to prepare drawing pages C1, C2, C3 and C4.

**Please remit    \$680.00**

Net due 30 days

*Attachment # 32*



**Sidewalk Plan - 600 Block of Missouri**

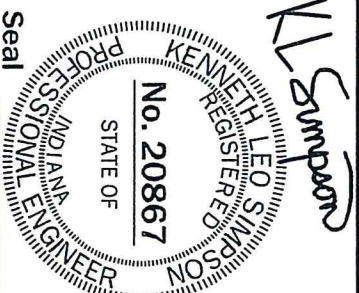
(North half)

1" = 20'

**Town of Ferdinand**  
 Misc. Sidewalk repairs  
 600 Block (North half) of Missouri St.  
 Ferdinand, Indiana

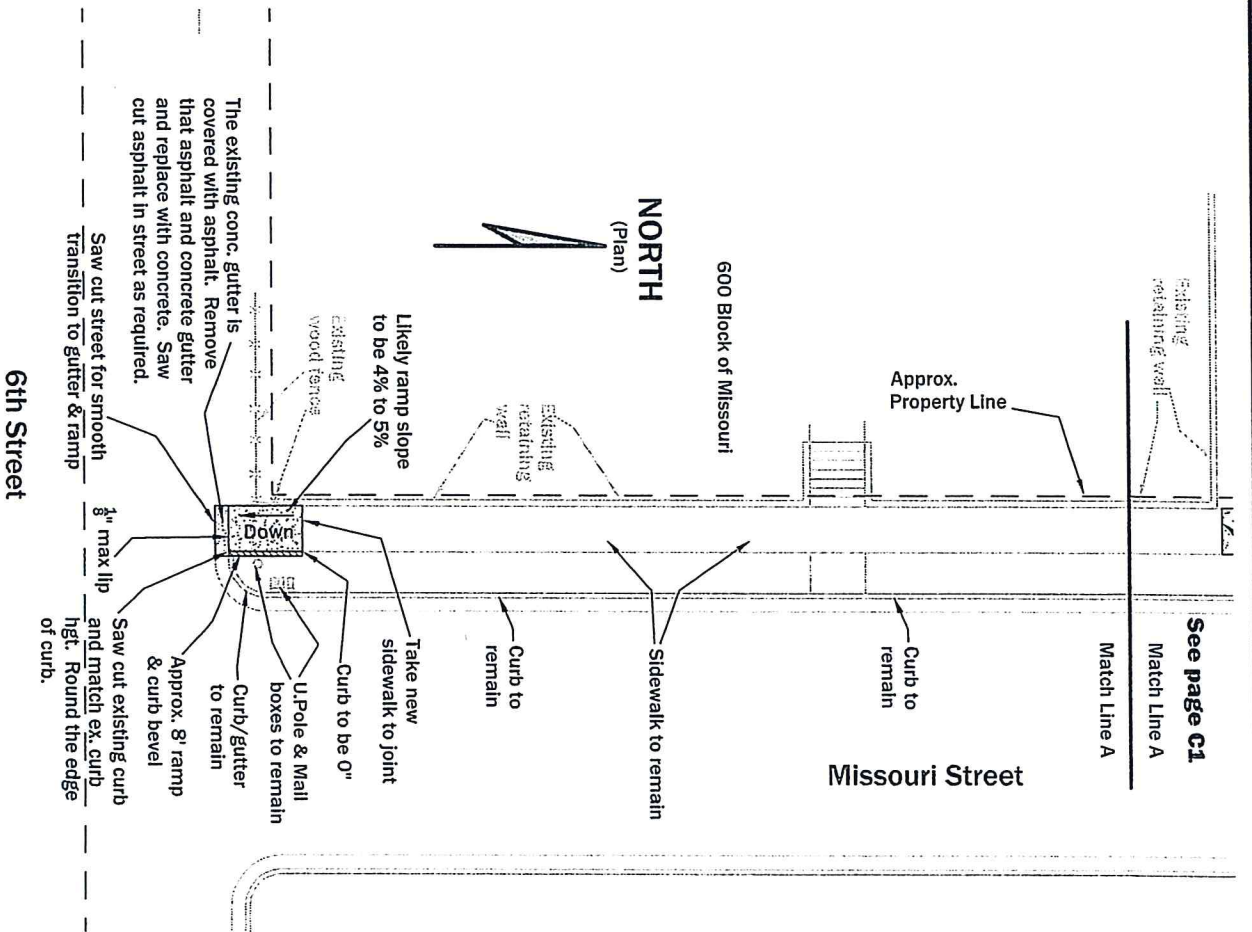
Engineer Associates, Inc.  
 645 Main Street, #201  
 Tell City, Indiana 47586  
 Telephone: 812-547-1100  
 Cell: 812-719-8345  
 Indy phone: 317-841-3113  
 KLSimpsonPE@Comcast.net  
 Kenneth Leo Simpson, P.E.

Drawn: KLS  
 Drawing Date: 12/17/18





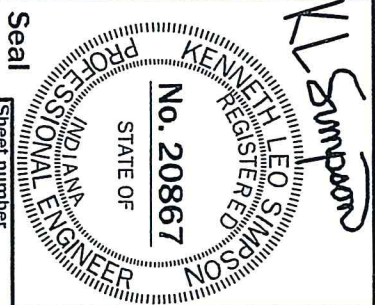
**Ramp Plan - NW corner of 6th and Missouri**  
**1" = 20'**



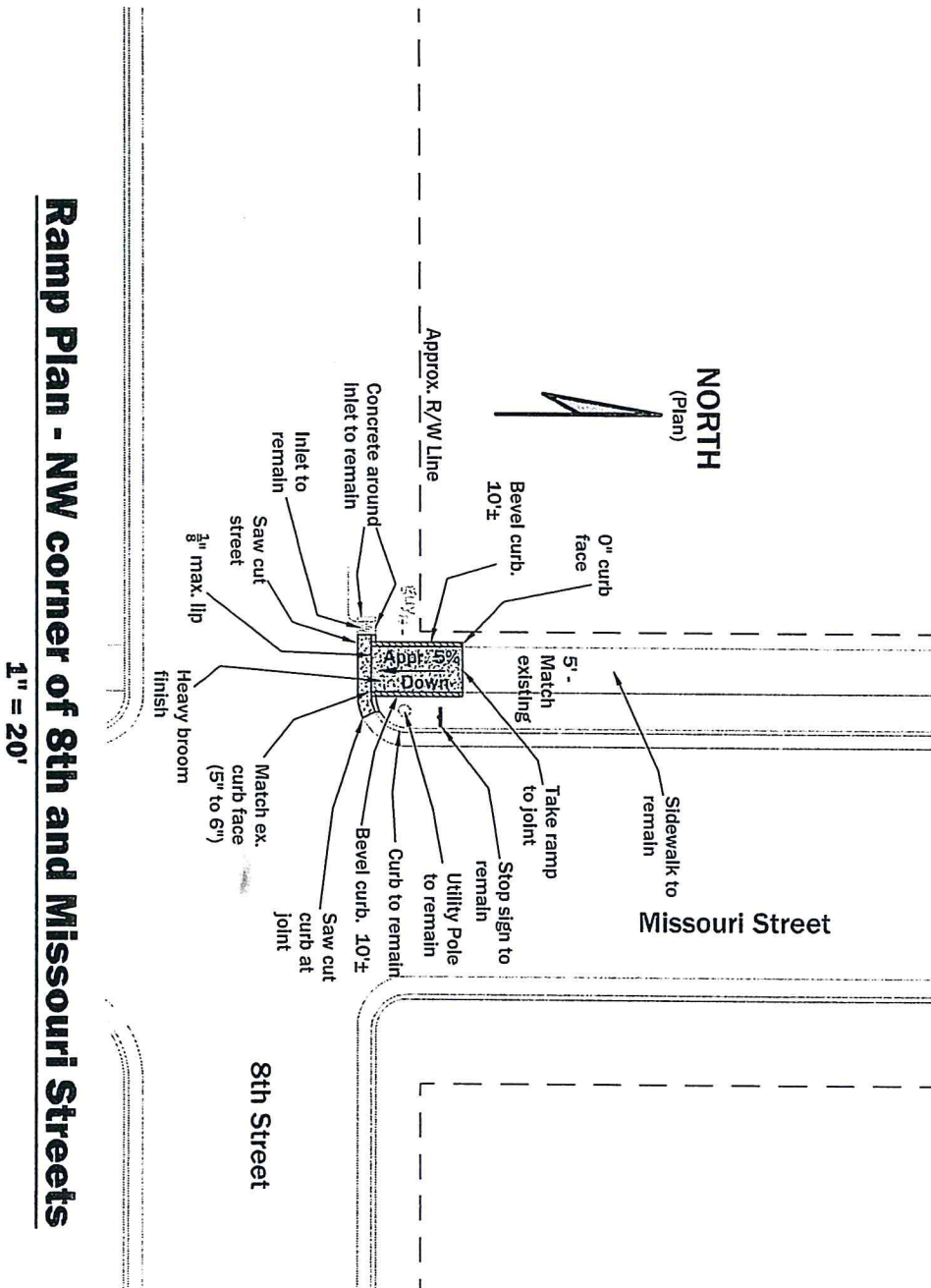
**Town of Ferdinand**  
**Misc. Sidewalk repairs**  
**600 Block (South half) of Missouri St.**  
**Ferdinand, Indiana**

Engineer Associates, Inc.  
 645 Main Street, #201  
 Tell City, Indiana 47586  
 Telephone: 812-547-1100  
 Cell: 812-719-8345  
 Ind. phone: 317-841-3113  
 KLSimpsonPE@Comcast.net  
 Kenneth Leo Simpson, P.E.

Drawn: KLS  
 Drawing Date: 12/17/18



**C2 of 5**



**Ramp Plan - NW corner of 8th and Missouri Streets**

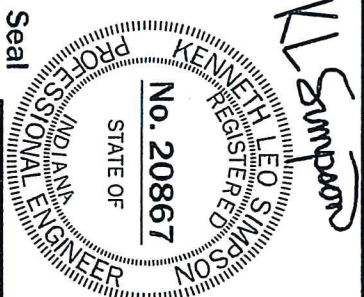
1" = 20'

**Town of Ferdinand**  
 Misc. Sidewalk repairs  
 NW corner of 8th and Missouri Street  
 Ferdinand, Indiana

Engineer Associates, Inc.  
 645 Main Street, #201  
 Tell City, Indiana 47586  
 Telephone: 812-547-1100  
 Cell: 812-719-8345  
 Indy phone: 317-841-3113  
 KLSimpsonPE@Comcast.net

Kenneth Leo Simpson, P.E.

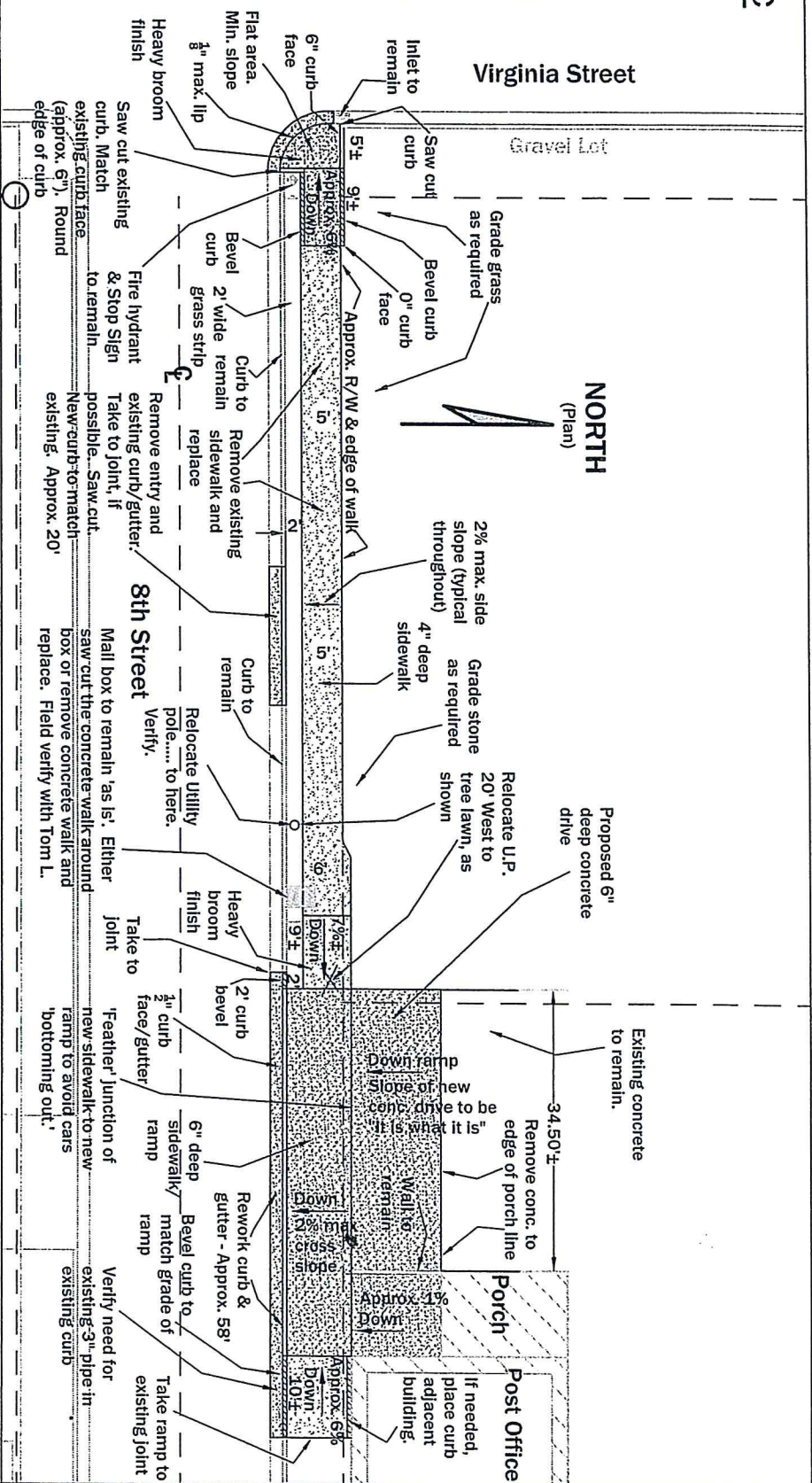
Drawn: KLS  
 Drawing Date: 12/17/18



Sheet number

**C3 of 5**





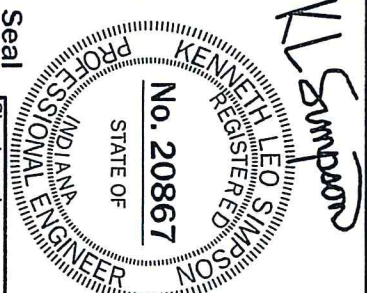
# **Sidewalk Plan - 100 Block of West 8th near Post Office**

1" = 20'

**Town of Ferdinand**  
**Misc. Sidewalk repairs**  
**W. 8th (Main to MO) near Post Office**  
**Ferdinand, Indiana**

Engineer Associates, Inc.  
 645 Main Street, #201  
 Tell City, Indiana 47586  
 Telephone: 812-547-1100  
 Cell: 812-719-8345  
 Indy phone: 317-841-3113  
 KLSimpsonPE@Comcast.net  
 Kenneth Leo Simpson, P.E.

Drawn: KLS  
 Drawing Date: 12/17/18



Sheet number  
**C4 of 5**

[illegible]



Attachment # 38

**ENGINEER ASSOCIATES, Inc.**

*Since 1990*

645 Main Street, Suite 201  
Tell City, Indiana 47586

Kenneth Leo Simpson, P.E.  
P.E. License in Indiana & Kentucky

(812) 547-1100  
e-mail: [klsimpsonpe@comcast.net](mailto:klsimpsonpe@comcast.net)

December 17, 2018

Town of Ferdinand  
2065 Main Street  
Ferdinand, IN 47532

Attn: Tom Lueken

**Re: Miscellaneous Sidewalk Replacements**  
**West 8<sup>th</sup> near Post Office, 100 Block of West 7<sup>th</sup>, Missouri Street**  
**Ferdinand, IN**

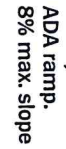
**INVOICE**

For engineering services performed, on the referenced sidewalk projects, during the period  
December 10<sup>th</sup> thru December 17, 2018 to prepare drawing pages C1, C2, C3, C4 and C5.

**Please remit    \$1,650.00**

Net due 30 days

## 3 A (Asphalt)



**1" = 20'**

Attachment 29

**Kenneth Leo Simpson, P.E.**

Date: 2/11/20

20-04



Sheet number

१





51

**ENGINEER ASSOCIATES, Inc.**

*Since 1990*

645 Main Street, Suite 201

Tell City, Indiana 47586

(812) 547-1100

e-mail: [klsimpsonpe@comcast.net](mailto:klsimpsonpe@comcast.net)

Kenneth Leo Simpson, P.E.  
P.E. License in Indiana & Kentucky

February 11, 2020

Town of Ferdinand  
2065 Main Street  
Ferdinand, IN 47532

Attn: Tom Lueken

**Re: Sidewalk Replacement**  
**5<sup>th</sup> Street, Missouri to Virginia**  
**Ferdinand, IN**

**INVOICE**

For engineering services performed on the referenced sidewalk project, during the period January 19, 2020 through February 11, 2020 to prepare drawing page C1 and associated services,

**Please remit    \$552.00**

Net due 30 days

*Attachment #41*



**ENGINEER ASSOCIATES, Inc.**

**Since 1990**

645 Main Street, Suite 201  
Tell City, Indiana 47586

(812) 547-1100  
e-mail: [klsimpsonpe@comcast.net](mailto:klsimpsonpe@comcast.net)

Kenneth Leo Simpson, P.E.  
P.E. License in Indiana & Kentucky

February 11, 2020

Town of Ferdinand  
2065 Main Street  
Ferdinand, IN 47532

Attn: Tom Lueken

**Re: Sidewalk Replacement  
3<sup>rd</sup> and Maryland  
Ferdinand, IN**

**INVOICE**

For engineering services performed on the referenced sidewalk project, during the period January 19, 2020 through February 11, 2020 to prepare drawing page C1 and associated services,

**Please remit     \$638.00**

Net due 30 days

*Attachment # 42*

February 25, 2019

Matt Weyer- Town of Ferdinand Park & Recreation Board  
2065 Main Street  
Ferdinand, IN 47532

RE: Old Town Lake Trail Project  
Ferdinand, Indiana

Dear Matt,

Bids were received and publicly opened in the February 22, 2019 board meeting at the Ferdinand Town Hall. Enclosed is the official Bid Tabulation Sheet and the original bids received for your files and records.

Please be informed that we have reviewed the bids and to the best of our knowledge, we find the bids to be in compliance with the bid requirements.

Our recommendation is to award the construction contract to the low bidder, Seufert Construction and Supply Inc. 2125 Main Street, Ferdinand, IN 47532 for the Base Bid Amount of \$435,100.00 plus any alternates you choose to accept.

We are looking forward in moving your project into construction. If you have any questions or comments, please do not hesitate to call.

Sincerely,

UNIVERSAL DESIGN ASSOCIATES, INC.

  
Brett M. Schipp  
President

BMS/lt

This attachment shows the construction contract of \$435,100.00. The Town had a 50% match requirement of \$200,000.00. Because of the uncontrollable situation, the 2020 ADA projects were delayed. It was decided to put the remainder of our committed annual ADA funds of \$27,810.00 toward this project.



[illegible]

**NOTICE UNDER THE AMERICANS  
WITH DISABILITIES ACT**

In accordance with the requirements of Title II of the Americans with Disabilities Act of 1990 ("ADA"), the Town of Ferdinand will not discriminate against qualified individuals with disabilities on the basis of disability in its services, programs, or activities.

**Employment:** The Town of Ferdinand does not discriminate on the basis of disability in its hiring or employment practices and complies with all regulations promulgated by the U.S. Equal Employment Opportunity Commission under Title I of the ADA.

**Effective Communication:** The Town of Ferdinand will generally, upon request, provide appropriate aids and services leading to effective communication for qualified persons with disabilities so they can participate equally in the Town of Ferdinand's programs, services, and activities, including ways of making information and communications accessible to people who have speech, hearing, or vision impairments.

**Modifications to Policies and Procedures:** The Town of Ferdinand will make all reasonable modifications to policies and programs to ensure that people with disabilities have an equal opportunity to enjoy all of its programs, services, and activities. For example, individuals with service animals are welcomed in Town of Ferdinand offices, even where pets are generally prohibited.

Anyone who requires an auxiliary aid or service for effective communication, or a modification of policies or procedures to participate in a program, service, or activity of the Town of Ferdinand, should contact the Ferdinand ADA Coordinator, 2065 Main Street, Ferdinand, Indiana, as soon as possible but no later than 48 hours before the scheduled event.

The ADA does not require the Town of Ferdinand to take any action that would fundamentally alter the nature of its programs or services, or impose an undue financial or administrative burden.

Complaints that a program, service, or activity of the Town of Ferdinand is not accessible to persons with disabilities should be in writing on the Town's "Discrimination Complaint/Grievance Form", directed to the Ferdinand ADA Coordinator, 2065 Main Street, Ferdinand, Indiana. This form can be obtained from the Town. The Town has a Grievance Procedure, a copy of which can be obtained from the Town.

The Town of Ferdinand will not place a surcharge on a particular individual with a disability or any group of individuals with disabilities to cover the cost of providing auxiliary aids/services or reasonable modifications of policy, such as retrieving items from locations that are open to the public but are not accessible to persons who use wheelchairs.

Tamara M. Miller  
Clerk-Treasurer